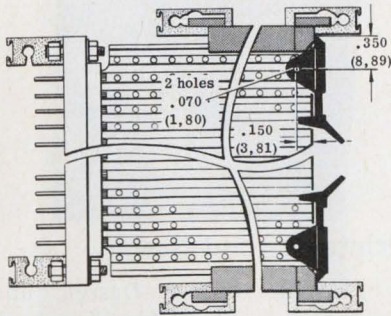


# evaluation samples



## PC card ejectors

Simple new PC card ejector devices known as Card Ejectors provide a mechanical means of extracting PC cards when using card frames incorporating modular type connectors with a large number of contacts. These Card Ejectors are assembled onto drilled corner holes on circuit boards with spring pins that are supplied. To remove a circuit card, simply pull the Card Ejectors forward. Two prongs on the back of each Card Ejector clip either side of the circuit board, preventing any kind of unwanted free movement. Card Ejectors are molded in black Noryl and suit 1/16-in.-thick boards. Samples are available. Vero Electronics, Inc.

CIRCLE NO. 345



## Keyboard buttons

Free samples are available of doubleshot molded keyboard buttons. They come in stock and custom versions. Stock units are of accent-gray color and use white inscriptions for alphabets and numerals. The inscriptions are in Gothic type. Custom buttons are available with special sizes and shapes. Some stock buttons are also available in white, blue, charcoal and red colors, for the bodies or inscriptions. Mechanical Enterprises, Inc.

CIRCLE NO. 346

## GETTING THE MESSAGE ACROSS!

That's our job at IEE and, we've been at it for close to two decades. Whatever your message: Letters, words, numerals, colors, etc., you tell us and we'll put it all together, and, in any size—subminiature, standard or jumbo 3" high displays. For every type readout we also have a compatible I.C. or hybrid Driver/Decoder series with a wide range of features and options. When it comes to "man to machine communications" and demanding display requirements contact IEE. After all, one message certainly deserves another.

**Industrial Electronic Engineers, Inc.** 7740 Lemona Ave., Van Nuys, Calif.  
Telephone: (213) 787-0311 • TWX 910-495-1707