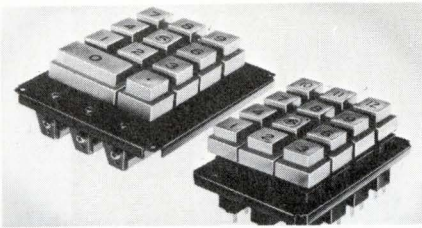


## KEYBOARD ASSEMBLIES



The "CR" series has normally open momentary action and a contact system that uses the resilience of the wire contacts. The gold-clad contacts provide a life of over 2 million operations. Current rating is 100 mA at 24 Vdc. Alcoswitch Div. of Alco Electronic Products, Inc., 1551 Osgood St., North Andover, Mass. 01845.

**Circle Reader Service #239**

## DATA LINK PAIRS

WJ-2833 series oscillators and WJ-2823 series discriminators are for wide-band communication systems. Operating as data link pairs, they provide linear freq. modulation of a 3 GHz carrier in the 5 to 220 MHz range. Watkins-Johnson Co., 3333 Hillview Ave., Stanford Ind. Park, Palo Alto, Calif.

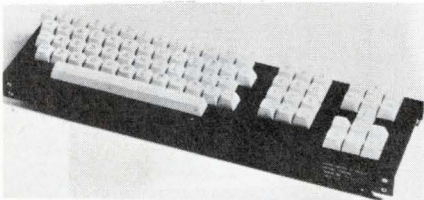
**Circle Reader Service #240**

## DATA SET

The Tycom® 900 Data Set is an originate-only, full duplex data set with a -45 dBm receive sensitivity. It is compatible with the Bell System 103 and comes as a pc board modem for Data Access Arrangement users or as a complete acoustic coupler. \$69. Terminal Equipment Corp., 750 Hamburg Tpke, Pompton Lakes, N.J. 07442.

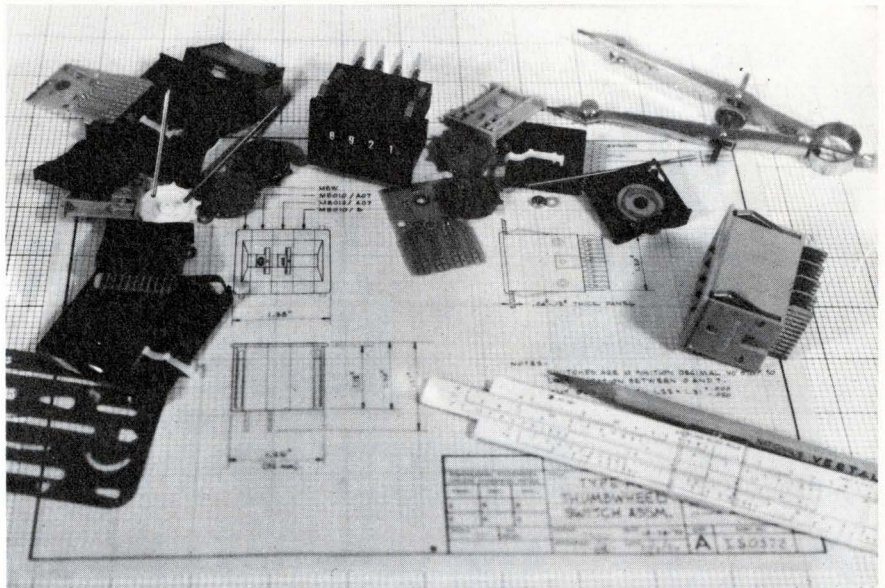
**Circle Reader Service #241**

## NKRO KEYBOARDS



This broad line of general purpose keyboards is now available with N-key rollover protection. The feature allows each key to transmit its particular code in the exact sequence in which the keys were depressed. Licon, div. Illinois Tool Works Inc., 6615 W. Irving Park Rd., Chicago, Ill. 60634.

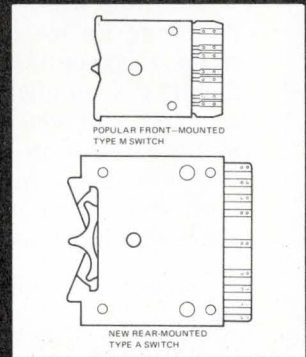
**Circle Reader Service #242**



# GO AHEAD!... DESIGN YOUR OWN

Chances are, whatever thumbwheel switch you end up with, INTERSWITCH already has a standard one that meets your design parameters, ready for off-the-shelf delivery. Our inventory includes the world's most complete selection of high-quality switches for application in computers, machine tool controls, data handling and test equipment. And even if your particular application requires a unique solution, we offer over 5 million custom configurations that can be assembled and delivered within 24 hours! This includes the most popular industry standards such as the front-mounted type M which features:

- Only 5/16" housings for less panel area
- Longer PCBs for component mounting
- Shallowest depths behind panel
- Availability in black, red, green, blue, yellow and white thumbwheels
- Custom markings on housings and spacers; decimal points, white lines, etc.
- Custom wheel markings
- 10 and 11 position thumbwheels, in both decimal and binary outputs
- Switch housings in black and beige
- Over 250 different binary output codes



We also have available a new type A switch for rear-mounting applications, which includes more standard features than any other switch available. No matter what your design requirements or mounting preference, give us a call before you start re-inventing the wheel (thumbwheel, that is). You may find we've already done it for you.

Call us direct or call your nearest INTERSWITCH distributor or representative to find out.



ONE OF THE PURDY GROUP OF COMPANIES  
Specialists in the MAN/MACHINE interface

770 AIRPORT BOULEVARD  
BURLINGAME, CA 94010  
TELEPHONE 415/347-8217

**Circle Reader Service #21**