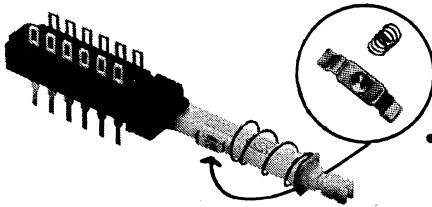


MODULAR PUSH BUTTON SWITCHES

"Creative Switchmakers" for Home Entertainment Products and Test Equipment

If it's a better switch you need . . . better switch to Schadow!

better switch...here's why...

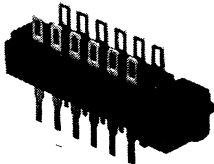


INDIVIDUAL COIL SPRING LOADED MOVING CONTACTS

- The coil spring-loaded contoured moving contacts have been designed to provide balanced contact pressure for optimum surface to surface interface with the fixed contacts . . . assuring reliable performance in low voltage (dry circuit) applications
- Long term low contact resistance
- Constant coil spring tension at the contact points provides positive self-cleaning action

HAND WIRING AND FLO-SOLDERING CONNECTIONS ARE STANDARD

- Solder lugs on top for hand wiring
- PC spikes at bottom for flo-soldering



SUPERIOR MODULAR CONSTRUCTION

- Ease of maintenance . . . switch plunger with sliding contacts is removable from the front without disturbing electrical connections

MODULE ADVANTAGES

- Enclosed housing protects inner contact area from dust and foreign intrusions
- Fixed terminals are "staked" in position, providing an extra seal to help prevent wicking of solder or flux
- Molded PC Board Standoffs, front and back, on bottom side, assure parallel mounting

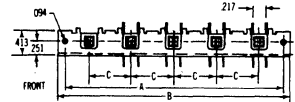
TECHNICAL DATA

Contact Resistance 4-6 mOhms
 after 25,000 cycles 6-20 mOhms
 Lifetime Expectation Interlocked (50,000)
 Momentary, Push Push (100,000) cycles
 Material of Construction
 Fixed contact, Brass/Silver Plated 0002"
 Moving contact Bimetal Brass/Silver .0004"
 Plunger Material Polycarbonate V-O rated or Delrin
 Contacts Non-shorting
 Housing Material Polycarbonate V-O rated or
 Glass Reinforced Nylon

Terminal Board Material High Grade
 Paper Phenolic or V-P rated material Series F
 Key pressure with 2PDT 28 oz.
 Key pressure with 4PDT 32 oz.
 Key pressure with 6PDT 35 oz.
 Key pressure with 8PDT 42 oz.
 Key pressure with 10PDT 46 oz.
 Key pressure with Power Switch 42 oz.
NOTE: Lighter key pressures available, contact factory for details.
NOTE: For switching applications requiring flame retardant materials, contact factory.

CHASSIS DIMENSIONS FOR SERIES F

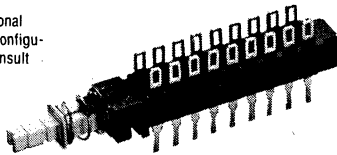
NOTE: Maximum stations to be grouped in one interlocking action: 10mm-10/12.5mm-23/15mm-23/17.5mm-23/20mm-19



C.Dim. 7/20mm (1.688)	C.Dim. 7/25mm (1.772)	C.Dim. 7/30mm (1.850)	C.Dim. 7/35mm (1.929)	C.Dim. 7/40mm (2.008)	C.Dim. 7/45mm (2.087)	C.Dim. 7/50mm (2.166)	C.Dim. 7/55mm (2.245)	C.Dim. 7/60mm (2.324)	C.Dim. 7/65mm (2.403)	C.Dim. 7/70mm (2.482)	C.Dim. 7/75mm (2.561)	C.Dim. 7/80mm (2.640)	C.Dim. 7/85mm (2.719)	C.Dim. 7/90mm (2.798)	C.Dim. 7/95mm (2.877)	C.Dim. 7/100mm (2.956)	C.Dim. 7/105mm (3.035)	C.Dim. 7/110mm (3.114)	C.Dim. 7/115mm (3.193)	C.Dim. 7/120mm (3.272)	C.Dim. 7/125mm (3.351)	C.Dim. 7/130mm (3.430)	C.Dim. 7/135mm (3.509)	C.Dim. 7/140mm (3.588)	C.Dim. 7/145mm (3.667)	C.Dim. 7/150mm (3.746)	C.Dim. 7/155mm (3.825)	C.Dim. 7/160mm (3.904)	C.Dim. 7/165mm (3.983)	C.Dim. 7/170mm (4.062)	C.Dim. 7/175mm (4.141)	C.Dim. 7/180mm (4.220)	C.Dim. 7/185mm (4.299)	C.Dim. 7/190mm (4.378)	C.Dim. 7/195mm (4.457)	C.Dim. 7/200mm (4.536)	C.Dim. 7/205mm (4.615)	C.Dim. 7/210mm (4.694)	C.Dim. 7/215mm (4.773)	C.Dim. 7/220mm (4.852)	C.Dim. 7/225mm (4.931)	C.Dim. 7/230mm (5.010)	C.Dim. 7/235mm (5.089)	C.Dim. 7/240mm (5.168)	C.Dim. 7/245mm (5.247)	C.Dim. 7/250mm (5.326)	C.Dim. 7/255mm (5.405)	C.Dim. 7/260mm (5.484)	C.Dim. 7/265mm (5.563)	C.Dim. 7/270mm (5.642)	C.Dim. 7/275mm (5.721)	C.Dim. 7/280mm (5.800)	C.Dim. 7/285mm (5.879)	C.Dim. 7/290mm (5.958)	C.Dim. 7/295mm (6.037)	C.Dim. 7/300mm (6.116)	C.Dim. 7/305mm (6.195)	C.Dim. 7/310mm (6.274)	C.Dim. 7/315mm (6.353)	C.Dim. 7/320mm (6.432)	C.Dim. 7/325mm (6.511)	C.Dim. 7/330mm (6.590)	C.Dim. 7/335mm (6.669)	C.Dim. 7/340mm (6.748)	C.Dim. 7/345mm (6.827)	C.Dim. 7/350mm (6.906)	C.Dim. 7/355mm (6.985)	C.Dim. 7/360mm (7.064)	C.Dim. 7/365mm (7.143)	C.Dim. 7/370mm (7.222)	C.Dim. 7/375mm (7.301)	C.Dim. 7/380mm (7.380)	C.Dim. 7/385mm (7.459)	C.Dim. 7/390mm (7.538)	C.Dim. 7/395mm (7.617)	C.Dim. 7/400mm (7.696)	C.Dim. 7/405mm (7.775)	C.Dim. 7/410mm (7.854)	C.Dim. 7/415mm (7.933)	C.Dim. 7/420mm (8.012)	C.Dim. 7/425mm (8.091)	C.Dim. 7/430mm (8.170)	C.Dim. 7/435mm (8.249)	C.Dim. 7/440mm (8.328)	C.Dim. 7/445mm (8.407)	C.Dim. 7/450mm (8.486)	C.Dim. 7/455mm (8.565)	C.Dim. 7/460mm (8.644)	C.Dim. 7/465mm (8.723)	C.Dim. 7/470mm (8.802)	C.Dim. 7/475mm (8.881)	C.Dim. 7/480mm (8.960)	C.Dim. 7/485mm (9.039)	C.Dim. 7/490mm (9.118)	C.Dim. 7/495mm (9.197)	C.Dim. 7/500mm (9.276)	C.Dim. 7/505mm (9.355)	C.Dim. 7/510mm (9.434)	C.Dim. 7/515mm (9.513)	C.Dim. 7/520mm (9.592)	C.Dim. 7/525mm (9.671)	C.Dim. 7/530mm (9.750)	C.Dim. 7/535mm (9.829)	C.Dim. 7/540mm (9.908)	C.Dim. 7/545mm (9.987)	C.Dim. 7/550mm (10.066)	C.Dim. 7/555mm (10.145)	C.Dim. 7/560mm (10.224)	C.Dim. 7/565mm (10.303)	C.Dim. 7/570mm (10.382)	C.Dim. 7/575mm (10.461)	C.Dim. 7/580mm (10.540)	C.Dim. 7/585mm (10.619)	C.Dim. 7/590mm (10.698)	C.Dim. 7/595mm (10.777)	C.Dim. 7/600mm (10.856)	C.Dim. 7/605mm (10.935)	C.Dim. 7/610mm (11.014)	C.Dim. 7/615mm (11.093)	C.Dim. 7/620mm (11.172)	C.Dim. 7/625mm (11.251)	C.Dim. 7/630mm (11.330)	C.Dim. 7/635mm (11.409)	C.Dim. 7/640mm (11.488)	C.Dim. 7/645mm (11.567)	C.Dim. 7/650mm (11.646)	C.Dim. 7/655mm (11.725)	C.Dim. 7/660mm (11.804)	C.Dim. 7/665mm (11.883)	C.Dim. 7/670mm (11.962)	C.Dim. 7/675mm (12.041)	C.Dim. 7/680mm (12.120)	C.Dim. 7/685mm (12.199)	C.Dim. 7/690mm (12.278)	C.Dim. 7/695mm (12.357)	C.Dim. 7/700mm (12.436)	C.Dim. 7/705mm (12.515)	C.Dim. 7/710mm (12.594)	C.Dim. 7/715mm (12.673)	C.Dim. 7/720mm (12.752)	C.Dim. 7/725mm (12.831)	C.Dim. 7/730mm (12.910)	C.Dim. 7/735mm (12.989)	C.Dim. 7/740mm (13.068)	C.Dim. 7/745mm (13.147)	C.Dim. 7/750mm (13.226)	C.Dim. 7/755mm (13.305)	C.Dim. 7/760mm (13.384)	C.Dim. 7/765mm (13.463)	C.Dim. 7/770mm (13.542)	C.Dim. 7/775mm (13.621)	C.Dim. 7/780mm (13.700)	C.Dim. 7/785mm (13.779)	C.Dim. 7/790mm (13.858)	C.Dim. 7/795mm (13.937)	C.Dim. 7/800mm (14.016)	C.Dim. 7/805mm (14.095)	C.Dim. 7/810mm (14.174)	C.Dim. 7/815mm (14.253)	C.Dim. 7/820mm (14.332)	C.Dim. 7/825mm (14.411)	C.Dim. 7/830mm (14.490)	C.Dim. 7/835mm (14.569)	C.Dim. 7/840mm (14.648)	C.Dim. 7/845mm (14.727)	C.Dim. 7/850mm (14.806)	C.Dim. 7/855mm (14.885)	C.Dim. 7/860mm (14.964)	C.Dim. 7/865mm (15.043)	C.Dim. 7/870mm (15.122)	C.Dim. 7/875mm (15.201)	C.Dim. 7/880mm (15.280)	C.Dim. 7/885mm (15.359)	C.Dim. 7/890mm (15.438)	C.Dim. 7/895mm (15.517)	C.Dim. 7/900mm (15.596)	C.Dim. 7/905mm (15.675)	C.Dim. 7/910mm (15.754)	C.Dim. 7/915mm (15.833)	C.Dim. 7/920mm (15.912)	C.Dim. 7/925mm (15.991)	C.Dim. 7/930mm (16.070)	C.Dim. 7/935mm (16.149)	C.Dim. 7/940mm (16.228)	C.Dim. 7/945mm (16.307)	C.Dim. 7/950mm (16.386)	C.Dim. 7/955mm (16.465)	C.Dim. 7/960mm (16.544)	C.Dim. 7/965mm (16.623)	C.Dim. 7/970mm (16.702)	C.Dim. 7/975mm (16.781)	C.Dim. 7/980mm (16.860)	C.Dim. 7/985mm (16.939)	C.Dim. 7/990mm (17.018)	C.Dim. 7/995mm (17.097)	C.Dim. 7/1000mm (17.176)
-----------------------	-----------------------	-----------------------	-----------------------	-----------------------	-----------------------	-----------------------	-----------------------	-----------------------	-----------------------	-----------------------	-----------------------	-----------------------	-----------------------	-----------------------	-----------------------	------------------------	------------------------	------------------------	------------------------	------------------------	------------------------	------------------------	------------------------	------------------------	------------------------	------------------------	------------------------	------------------------	------------------------	------------------------	------------------------	------------------------	------------------------	------------------------	------------------------	------------------------	------------------------	------------------------	------------------------	------------------------	------------------------	------------------------	------------------------	------------------------	------------------------	------------------------	------------------------	------------------------	------------------------	------------------------	------------------------	------------------------	------------------------	------------------------	------------------------	------------------------	------------------------	------------------------	------------------------	------------------------	------------------------	------------------------	------------------------	------------------------	------------------------	------------------------	------------------------	------------------------	------------------------	------------------------	------------------------	------------------------	------------------------	------------------------	------------------------	------------------------	------------------------	------------------------	------------------------	------------------------	------------------------	------------------------	------------------------	------------------------	------------------------	------------------------	------------------------	------------------------	------------------------	------------------------	------------------------	------------------------	------------------------	------------------------	------------------------	------------------------	------------------------	------------------------	------------------------	------------------------	------------------------	------------------------	------------------------	------------------------	------------------------	-------------------------	-------------------------	-------------------------	-------------------------	-------------------------	-------------------------	-------------------------	-------------------------	-------------------------	-------------------------	-------------------------	-------------------------	-------------------------	-------------------------	-------------------------	-------------------------	-------------------------	-------------------------	-------------------------	-------------------------	-------------------------	-------------------------	-------------------------	-------------------------	-------------------------	-------------------------	-------------------------	-------------------------	-------------------------	-------------------------	-------------------------	-------------------------	-------------------------	-------------------------	-------------------------	-------------------------	-------------------------	-------------------------	-------------------------	-------------------------	-------------------------	-------------------------	-------------------------	-------------------------	-------------------------	-------------------------	-------------------------	-------------------------	-------------------------	-------------------------	-------------------------	-------------------------	-------------------------	-------------------------	-------------------------	-------------------------	-------------------------	-------------------------	-------------------------	-------------------------	-------------------------	-------------------------	-------------------------	-------------------------	-------------------------	-------------------------	-------------------------	-------------------------	-------------------------	-------------------------	-------------------------	-------------------------	-------------------------	-------------------------	-------------------------	-------------------------	-------------------------	-------------------------	-------------------------	-------------------------	-------------------------	-------------------------	-------------------------	-------------------------	-------------------------	-------------------------	-------------------------	-------------------------	-------------------------	-------------------------	--------------------------

F SERIES

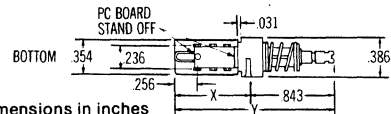
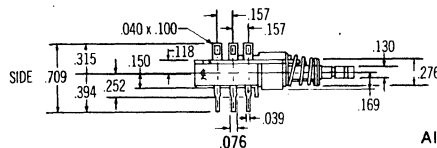
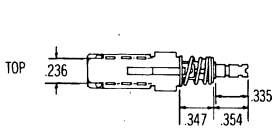
For additional terminal configurations consult factory.



**F-6U
6P DT**

MODULE DIMENSIONS

	X	Y
2PDT	.827	1.670
4PDT	1.300	2.143
6PDT	1.772	2.615
8PDT	2.244	3.087
10PDT	2.716	3.559
16PDT		



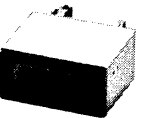
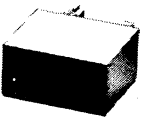
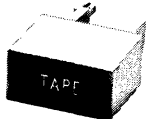
All dimensions in inches



Dept. EM, 8081 Wallace Road, Eden Prairie, MN 55344 • (612) 934-4400
 TWX 910-576-2469 • TELEX: 29-0556
 Manufacturing facilities in
 Minneapolis, Minnesota; Einbeck, W. Germany; W. Berlin, Cucc, Dole, France and Singapore
 In Canada: ITT Components, 4001 Chesswood Drive, Downsview, Ontario M3J 2R8
 (416) 630-7971 • TELEX: 06-22703

NEED GRAPHICS?

Several examples are shown below. Your specific requirements quoted on request. (Graphics pictured on FA 100 push buttons)



right on the button ...

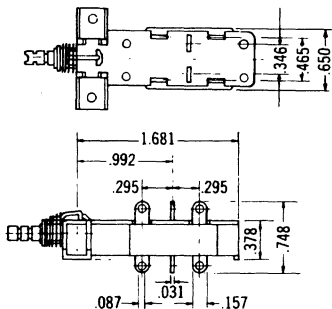
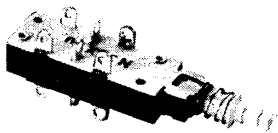
standard buttons for Series F and G Switches

Rectangular buttons also can be snapped on vertically to provide more selection of larger buttons on smaller chassis spacing. Standard colors shown ... other colors to match or contrast with your equipment available on special order.

<p>Rectangular buttons also can be snapped on vertically to provide more selection of larger buttons on smaller chassis spacing. Standard colors shown ... other colors to match or contrast with your equipment available on special order.</p>	<p>FG Diameter: .346" Length: .413" Standard Minimum Spacing: 10mm Colors: Black, White, Grey, Red, Green, Chrome</p>	<p>F-200 Diameter: .394" Length: .433" Standard Minimum Spacing: 12.5mm Colors: Chrome/Black, Black/Black</p>	<p>FZ Diameter: .304" Length: .642" Standard Minimum Spacing: 12.5mm Colors: Black/Black, White/Black, White/Red, Red/Black, Red/Grey</p>
<p>FL12 - H-3 FL15 - H-3 FL21 - H-3 Diameters: .433", .433", .433" Lengths: .472", .591", .827" Cap Depth: .472" Standard Minimum Spacing: 12.5mm Colors: Black/Metal Cap</p>	<p>FL12 - H-4 FL15 - H-4 FL21 - H-4 Diameters: .394", .394", .394" Lengths: .472", .591", .827" Cap Depth: .079" Standard Minimum Spacing: 12.5mm Colors: Black/Metal Cap</p>	<p>FL12 - H-5 FL15 - H-5 FL21 - H-5 Diameters: .480", .480", .480" Lengths: .571", .689", .925" Cap Depth: .571" Standard Minimum Spacing: 12.5mm Colors: Black/Chrome</p>	<p>FGK Diameter: .473" Length: .492" Standard Minimum Spacing: 12.5mm Colors: Red, White, Black, Grey, Green</p>
<p>FSC Width: .386" Height: .217" Length: .441" Standard Minimum Spacing: 10mm Colors: White, Black, Grey</p>	<p>FSD Width: .484" Height: .276" Length: .413" Standard Minimum Spacing: 12.5mm Colors: Black, White, Grey</p>	<p>FU12 Width: .470" Height: .216" Length: .440" Standard Minimum Spacing: 12.5mm Colors: Black, White, Grey, Red</p>	<p>FSB Width: .579" Height: .291" Length: .433" Standard Minimum Spacing: 15mm Colors: Black, White, Grey, Red, Chrome</p>
<p>FE Width: .681" Height: .236" Length: .472" Standard Minimum Spacing: 17.5mm Colors: Black, White, Grey</p>	<p>FSA Width: .677" Height: .315" Length: .512" Standard Minimum Spacing: 17.5mm Colors: Black, White, Grey Inserts: Silver or Gold</p>	<p>FA Width: .772" Height: .394" Length: .453" Standard Minimum Spacing: 20mm Colors: Black, White, Grey</p>	<p>04-7060-00 Width: .487" Height: .487" Length: .590" Cap Depth: .480" Standard Minimum Spacing: 12.5mm Colors: Spin-Finish Chrome</p>

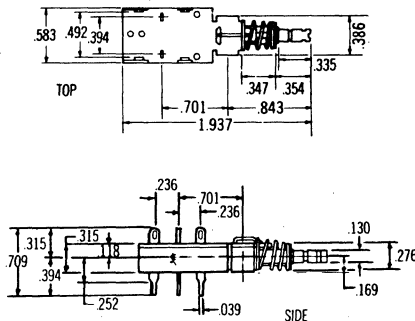
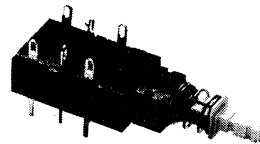
N30 TV-5 rated power switches

(Also available with 2PDT low voltage auxiliary contacts) UL, CSA, VDE Approved.



Series NE 15/F line switches

(Also available with 2PDT low voltage auxiliary contacts) UL, CSA, VDE Approved, 4 AMP 250 VAC.



ITT Schadow inc

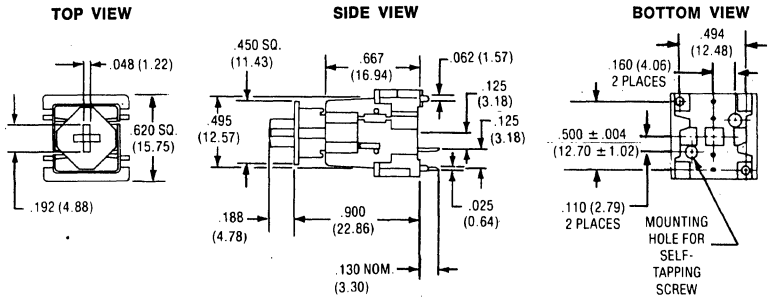
DC50 Series Key Switches (Full Travel)

The DC50 Series exceptional reliability and outstanding performance is achieved through ITT Schadow's patented diaphragm process which sandwiches two gold-plated contacts between Mylar* and stainless steel to permanently protect them from damage and environmental contamination.

- Modular construction
- Tease-proof action
- Tactile feedback
- Contact bounce less than 2 milliseconds
- Membrane contact



(0° KEYSTEM EXAMPLE)



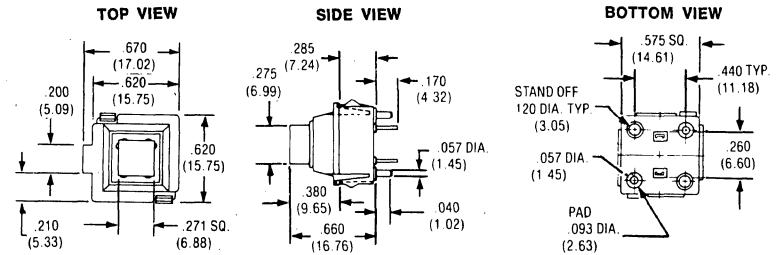
DC60 Series Key Switches (Full Travel)

The ITT Schadow DC60 Series Key Switches are value engineered to achieve the highest possible performance at a much lower cost than conventional mechanical switches.

- Choice of 3 low profile
- Trifurcated gold-inlaid contacts
- Snap fit sub panel mounting
- Tactile feedback
- Variety of actuation forces
- Momentary or push push action
- 61-01 complies with European D.I.N. specifications
- Modular construction



(DC61-01 EXAMPLE)



D.I.N. Compliance

ITT Schadow's DC61-01 and DC61-02 Full Travel Key Switches are among the lowest profile module Key Switches ever built. This low profile conforms to strict European health and safety regulations by complying to their

D.I.N. standard. So if you are now selling or ever plan to sell to the European market, you owe it to yourself to take a look at these low profile switches.

D6 Series Key Switches

The D6 is a single pole, single throw normally open key switch specially designed for digital electronic control. Its small size enables keyboard design with minimum center spacing of .500 (12.70mm). The commoned terminals offer the possibility of X, Y coding by using a single sided printed Circuit Board. Built-in buttons (square or round) are available in several colors and have been designed to fit directly onto front panels. The total travel of .031 (0.80mm) combined with the snap effect provide the user with a smooth, gentle yet positive tactile feedback.



- Tactile feedback
- Three package styles
- Eight colors
- Commoned terminals
- Small size .500 (12.70mm)
- Low cost

ELECTRICAL DATA

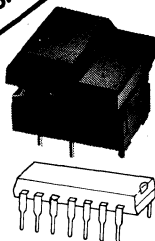
Electrical diagram SPST NO		Electrical diagram SPST NO	
Contact resistance	≤20 mΩ	Contact bounce	3 ms
Breaking capacity	10 mA/35 VDC	Life (nominal current and voltage)	500,000 Cycles
Insulation resistance	100,000 MΩ	Temperature range	-20°C to +65°C
Dielectric strength	500 V	Climatic category	21 days
Inter-terminal capacity	1 pF	Solderability	235°C during 5 seconds

digitast
 modular electronic
 switch input component

digitast

SR 12.3mm wide x 17.1mm

ST 17.3mm wide x 17.1mm (pictured)

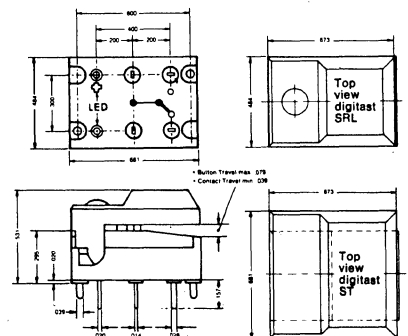


digitast

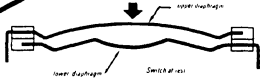
SRL (LED factory or customer installed)
 12.3mm wide x 17.1mm (pictured)

STL (LED factory or customer installed)
 17.3mm wide x 17.1mm

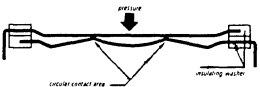
Digitast for use with DIP packages, consistent tactile feel, SPDT momentary spring loaded contact, less than 1 ms contact bounce, 24v 10ma or 60v 100ma ratings. Mechanical life greater than 1 million operations. Available with built in LED. PCB mounting. Hot stamped graphics available.



**low cost
3 point contact
highest integrity
disc switch
modular electronic components**

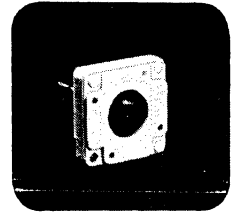
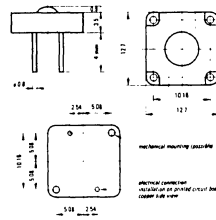


The Disc switch is built around two contact diaphragms separated by an insulating material. The profile of each of these two diaphragms is such that, under the action of applied pressure on the upper dome, it is momentarily collapsed, making instant positive, 3 point contact with the lower diaphragm.

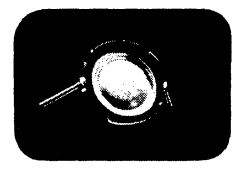
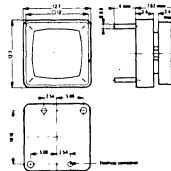


- High Reliability...10 X 10⁶
- Self Cleaning
- Broad Range of Switching Power...from a few milliwatts to 30 watts.
- Low Bounce (less than 100 microseconds)

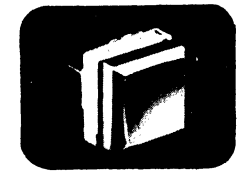
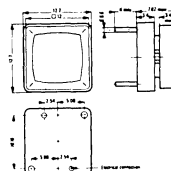
MD Disc module: Extra-flat momentary contact module. Shorter stroke configuration installable directly on printed circuit board. Enables you to design your own keyboard adapted to your own specific needs.



ED Push button switch assembly with a momentary action contact and incorporating the unique design disc switch. The switch is designed for direct insertion into printed circuit boards. Two principal advantages of the MDP switch are the short stroke (only 0.5 mm) and the crisp tactile feel.



MDP Push button switch assembly with a momentary action contact and incorporating the unique design disc switch. The switch is designed for direct insertion into printed circuit boards. Two principal advantages of the MDP switch are the short stroke (only 0.5mm) and the crisp tactile feel. Contact arrangement: single, normally open contact with momentary action. TERMINALS: tinned terminals — 0.8mm dia. x 4mm long. SOLDERING: Since the disc switch is completely sealed, it can be flow soldered. PUSH BUTTONS AND KEYS: dimensions (mm) 12.7 x 12.7 x 3.4 (7.62 with key). STANDARD COLORS: red, blue, light grey, dark grey.



PUSH BUTTON SWITCH SERIES

Option Guide: To allow quick option selection at a glance.

LT Series Light Touch Push Buttons: The Light Touch Series of push button switches offers all the reliability and versatility of the F Series switch system with dramatically lower actuation forces.

F Series Miniature Push Button: The F Series miniature push button switch forms a versatile system of modules designed for reliable performance in low voltage (dry circuit) applications.

F Series Power Switches: F Series power switches form an integral or stand alone option to our standard F Series. All mechanical functions performed by the F Series are available in the power switch offering with the exception of lockout.

- F Series Options:**
- Panel Mount, ZF and FPM
 - Lampless status indicators
 - Illuminated buttons
 - Non-illuminated buttons

KEY SWITCH SERIES (Low Travel)

Digitast Series: The Digitast Series key switch is specially designed for use with dual in-line packages, yet offers a wide variety of options.

REK Series: The REK Series key switch is designed for switching low current loads utilizing a patented contact system resulting in high reliability and long operating life.

Disc Series: The Disc Series key switch is

built around two contact diaphragms separated by an insulating material designed for instant contact with the advantage of being a self-cleaning contact with tactile feed back.

D6 Series: The D6 Series key switch is a single pole, single throw key switch designed for digital electronic control allowing keyboard design with a minimum center spacing of .500 (12.70).

KEY SWITCH SERIES (Full Travel)

DC50 Series: The DC50 Series exceptional reliability and outstanding performance is achieved through ITT Schadow's patented diaphragm process which sandwiches two gold-plated contacts between mylar and stainless steel to permanently protect them from damage and environmental contamination.

DC60 Series: The DC60 Series key switches are value engineered to achieve the highest possible performance at a much lower cost than conventional mechanical switches.

ROTARY SWITCH SERIES (Closed Deck)

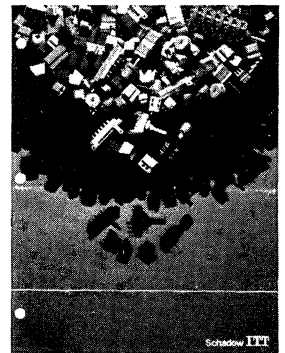
RT-A Series: The RT-A Series rotary switch is a PC or panel mounted switch with the shaft perpendicular to the PC Board for mounting with components such as displays and indicators.

RBP-12 Series: The RBP-12 Series rotary switch is designed with index and contacts contained within a single molded plastic case with many contact variations available.

MIL Series: The MIL Series rotary switch

is a totally sealed miniature rotary that can be custom built to fit almost any packaging requirement.

ROTARY SWITCH SERIES (Open Deck)
MA/MAY/MAO/MO Series — SZ/SZY/SZO/SZY Series: The MA and SZ Series low current rotary switches can be ordered with multiple contact styles in silver, silver plated or gold.



Please write to your nearest Sales Office or Distributor, or to ITT Schadow for a free copy of the 1983 ITT Schadow product catalog. This catalog covers the following switch series . . .

© 1983 International Telephone and Telegraph Corporation
 Printed in U.S.A. • All Rights Reserved



Dept. EM, 8081 Wallace Road, Eden Prairie, MN 55344 • (612) 934-4400
 TWX 910-576-2469 • TELEX 29-0556

Manufacturing facilities in
 Minneapolis, Minnesota; Einbeck, W. Germany; W. Berlin, CUCQ and Dole, France; and Singapore
 In Canada: ITT Components, 4001 Chesswood Drive, Downsview, Ontario M3J 2R8
 (416) 630-7971 • TELEX: 06-22703