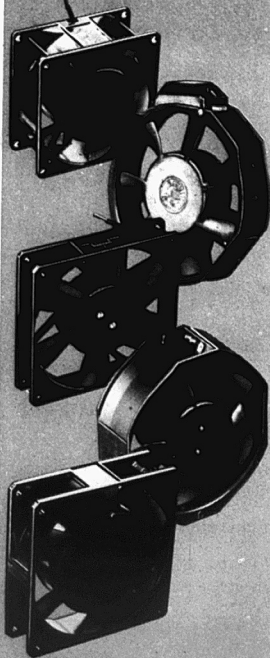


## Move Air... Not Components!



## There's an Etri Fan

(just say ee-tree)

### for virtually every application

Etri fans move more air... no matter how crowded it is behind the panel. You don't have to burn up hours juggling components and making trade-offs just to get the airflow you need. We're not a bit hard to fit into your panel. Sizes on our flat axials range from a skinny 1" profile on up... all on standard mounting centers. Air deliveries from 20 to over 2000 CFM will help you keep your cool.

Etri fans are plenty rugged, too. Vibration-resistant housing; precision-molded, reinforced impellers; lifetime bearings... that's just part of the story. Want to see more?

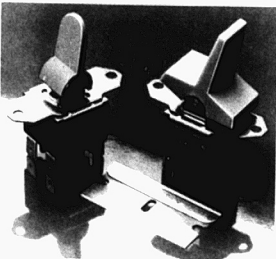
Send for our free catalog!

**Etri, Inc.**  
8002 S. Madison Street  
Burr Ridge, IL 60521  
(312) 325-9380

CIRCLE NUMBER 79

## COMPONENTS

### Mini power switch offers handle options

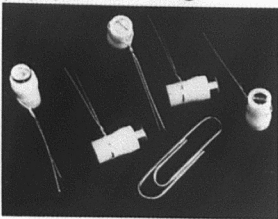


C & K Components, 103 Morse St., Watertown, MA 02172. Jim Marinac (617) 926-0800.

Model 9221 switches come with a choice of 19 different actuator handle options including five different types of levers. The handles are available in a wide choice of colors, shapes and sizes. They have quick-connect spade terminals that handle 10 A at 125 V ac, are UL, CSA and VDE listed, and the switch body measures 0.75 in. square.

CIRCLE NO. 377

### Piston trimmer caps have PC mountings



Orxley, 3250 Wilshire Blvd., Los Angeles, CA 90010. Ray Guthrie (213) 383-8270.

A line of piston trimmer capacitors, designated as type TUT/7/S, is intended for PC mounting and has PTFE fluorocarbon polymer dielectric. The capacitance range is 0.5 pF to 7 pF at a working voltage of 500 V dc. The tempo is  $0 \pm 150$  ppm/°C. The self-resonant frequency is 900 MHz at 7 pF, and the Q at 100 MHz is greater than 2000.

CIRCLE NO. 378

### Thrifty keyboard uses enclosed contacts

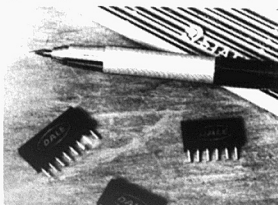


Data Interfaces, 27 Gill St., Woburn, MA 01801. (617) 482-5267. \$29.95.

This low-priced keyboard for terminal applications, Model KSA-35, uses enclosed contacts. The ASR-33 teletypewriter key array plus a numeric keypad has 65 switches, space-bar mechanism and keycaps, all installed on a rigid mounting plate. The assembly employs the low-profile model DI-100 switches that contain two sets of normally-open cross-point contacts internally connected in parallel. The gold-contact elements are enclosed in a separate assembly inside the switch housing to prevent foreign-particle contamination.

CIRCLE NO. 379

### SIP resistor networks qualify to MIL-R-83401



Dale Electronics, P.O. Box 74, Norfolk, NE 68701. (402) 371-0080. See text; 7 to 8 wks.

A line of single-in-line thick-film resistor networks, Series MSM meet the requirements of MIL-R-83401. Having rugged molded construction, the series provides a choice of 6 or 8-pin models, each with above-board height of 0.35 in. Two standard configurations are the 01 having five or seven equal resistors, each connected to a common pin, and the 03 with a choice of three or four isolated resistors. The networks have resistance ranges from 10 $\Omega$  to 1 $\Omega$ . Standard tolerance is 2%. Qualified to both characteristic K and M, they provide a max power per resistor of 0.2 W at 70°C. Max power per package is 1 W for 6-pin models and 1.4 W for 8-pin models. Typical price for a standard 5-resistor network in the 01 circuit with a resistance of 33 $\Omega$  is \$1.43.

CIRCLE NO. 380