

CUSTOM MADE HIGH-PROFILE KEYBOARD

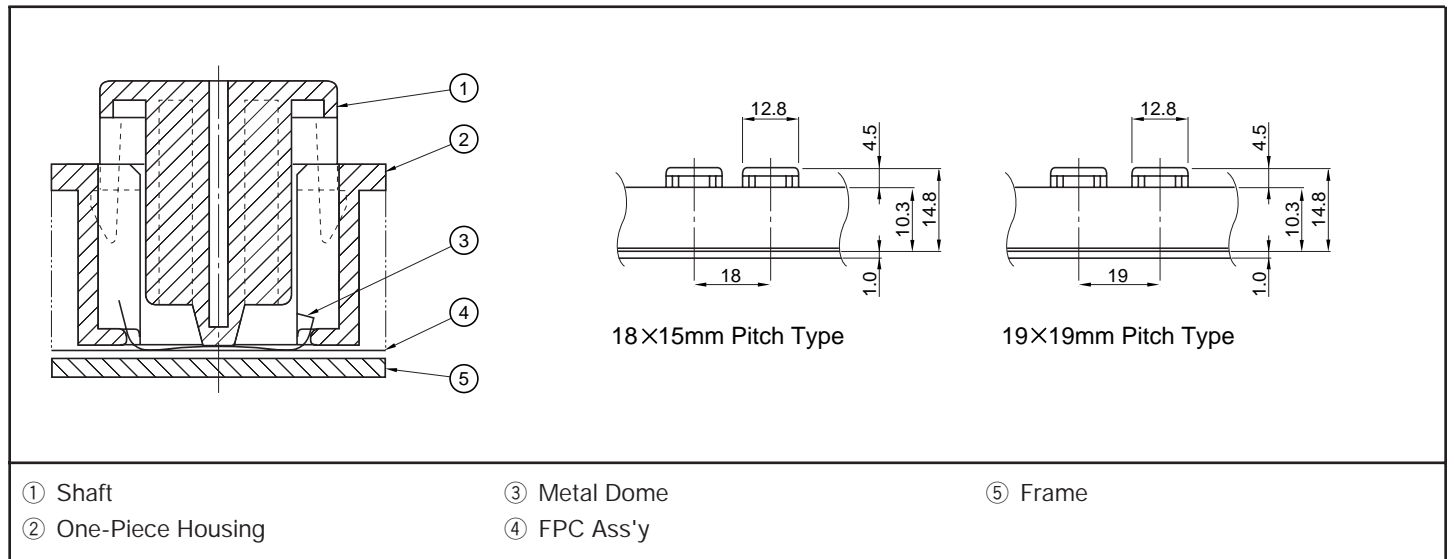
KFS12 Series

■ Features

1. A soft "click" feeling equal to that of tact switches is obtained.
2. Short-stroke type ($0.3\pm 0.2\text{mm}$).
3. Key pitches of 18×15 and $19 \times 19\text{mm}$ can be selected from.
4. Both single-unit housing and chip-housing types can be selected.
5. These keyboards can be used together with our KUS09 series products.

■ Basic Structure

(One-Piece Housing Type)



① Shaft

② One-Piece Housing

③ Metal Dome

④ FPC Ass'y

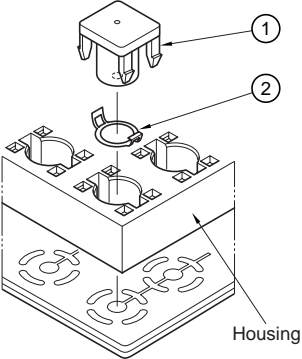
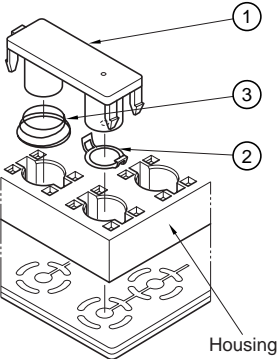
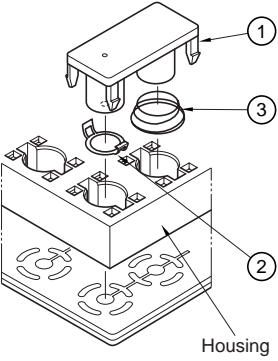
⑤ Frame

■ Specifications

Operating Force	1x1 Unit $135\pm 60\text{gf}$ ($1.324\pm 0.588\text{N}$) 2x1 Unit $165\pm 60\text{gf}$ ($1.618\pm 0.588\text{N}$)
Key Stroke	$0.3\pm 0.2\text{mm}$
Maximum Rating	2mA 12V DC
Contact Resistance	500Ω max.
Operating Life	1×10^7 cycles

KFS12 Series

Key Switch Assembly Chart

Classification		① Shaft	② Metal Dome	③ Spring
1X1 Unit 	18X 15mm Pitch	305KFS-003-90	341KFS-008-93	-
	19X 19mm Pitch	305KFS-007-90		
	Q'ty	1	1	-
2X1 Unit (Horizontal) 	18X 15mm Pitch	305KFS-004-91	341KFS-008-93	601KFS-001-90
	19X 19mm Pitch	305KFS-008-90		
	Q'ty	1	1	1
1X2 Unit (Vertical) 	18X 15mm Pitch	305KFS-005-90	341KFS-008-93	601KFS-001-90
	19X 19mm Pitch	305KFS-008-90		
	Q'ty	1	1	1