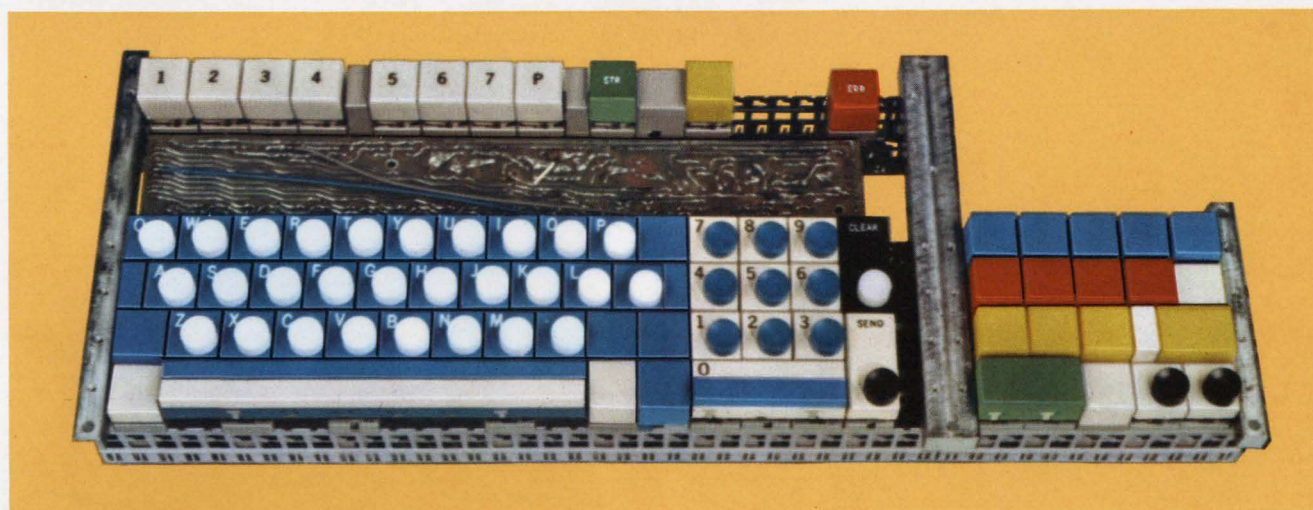
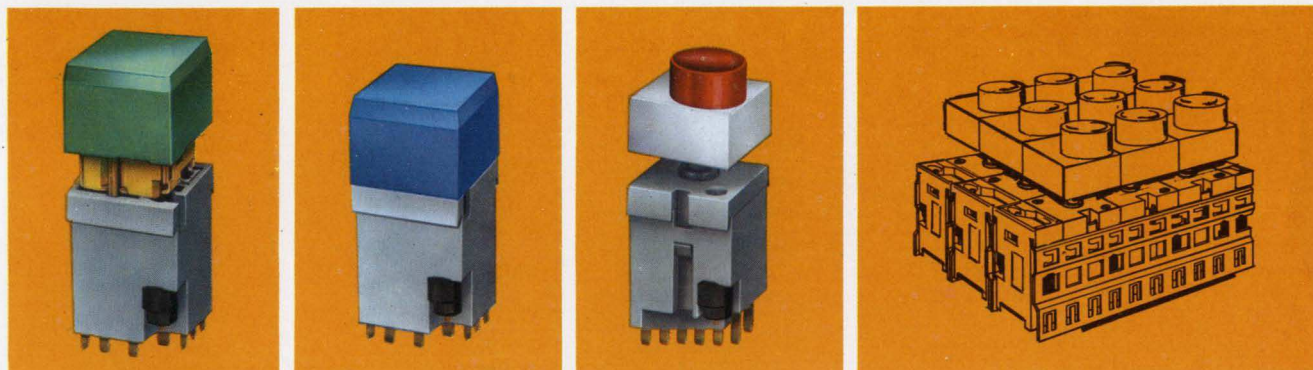
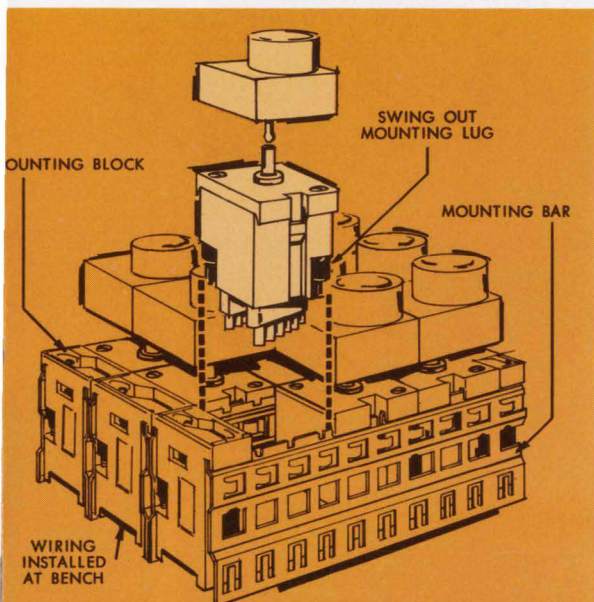


MICRO SWITCH
announces a new concept
in the design and construction
of keyboards
and control panels
It's called **KB**



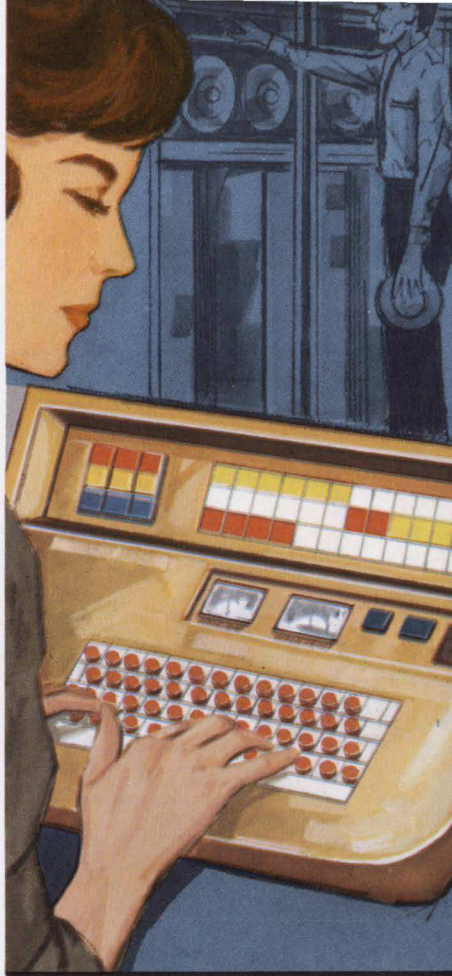
For the first time KB gives you complete freedom to create truly customized panels—gives you a new set of components making it practical to design a special man/machine interface for each individual keyboard.

or components
cal for you to
board a special.

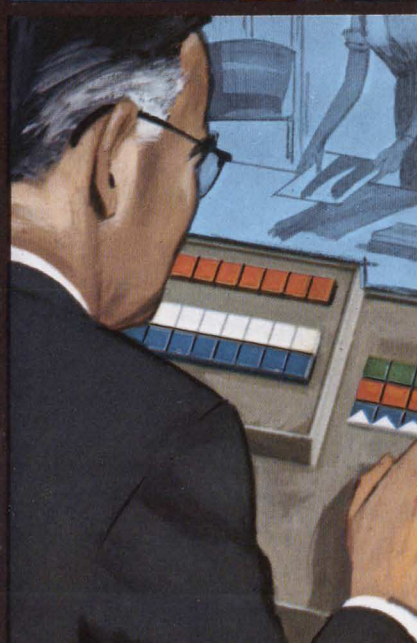


Matrix is assembled at the bench—mounting bars and mounting blocks are assembled in single rows with only a screwdriver. Rows simply snap together into a multiple-row matrix. And at the bench the matrix is completely assembled. All assembly, encoding and wiring is done conveniently before the keyboard is installed.

Finished matrix fits in *one panel cutout*—requires no additional supporting members. Actually strengthens the panel.



KB allows you to arrange encoding switches, power switches, and indicators in a compatible array to solve your own man/machine interface problem.



Think what new KB can save you...

in engineering time, tooling costs, assembly costs, component costs, panel space and weight—what it can save in maintenance time and expense.

Call a MICRO SWITCH Branch Office for a demonstration of KB.

MICRO SWITCH

FREEPORT, ILLINOIS 61033

A DIVISION OF HONEYWELL

IN CANADA: HONEYWELL CONTROLS LIMITED, TORONTO 17, ONTARIO

HONEYWELL INTERNATIONAL—Sales and service offices in all principal cities of the world. Manufacturing in United States, United Kingdom, Canada, Netherlands, Germany, France, Japan.

