



T-5 SERIES LIGHTED KEYSWITCHES

DESCRIPTION

The T-5 lighted keyboard switch has long life (greater than 10 million cycles), low bounce, gold-plated cross bar contacts usually found in more expensive switches.

Mechanically, the T-5 switch incorporates precision tracking surfaces providing a smooth "feel" throughout its .170 travel. Each switch has two alignment studs and four to six solder points. This makes hand or wave soldered PC board assemblies extremely rugged for the most demanding applications, while keeping the manufacturing costs down by eliminating the need for metal mounting frames.

Electrical configurations include normally open, normally closed, double pole normally open, and alternate action. MEI stocks a 5V, 60 milliamp, 100,000 hour bulb for these switches. Lamp terminal spacing is .100 inch, to fit T-1 size lamps which can be changed from the front panel by end users. Lenses are stocked in eight colors.

SPECIFICATIONS

CONTACT RATING, DC RESISTIVE: 3W max.

VOLTAGE: 24V max.

INITIAL CONTACT RESISTANCE: 100 mΩ max.

PLUNGER TRAVEL: .170 ±.010 in.

PRE-TRAVEL: .080 ±.030 in.

OPERATING FORCE

SINGLE POLE, MOMENTARY: 3.5 ±0.5 oz.

DOUBLE POLE AND/OR ALT. ACTION: 6.0 ±0.5 oz.

TEMPERATURE

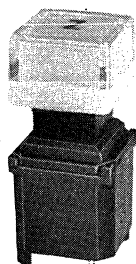
OPERATING: -25°C to +65°C

STORAGE: -40°C to +70°C

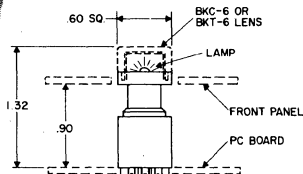
CONTACT BOUNCE: 4 ms max.

MIN. ACTUATIONS, @ 5V, 100μ AMPS: 10 x 10⁶

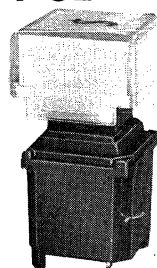
T-5K With Box Lens



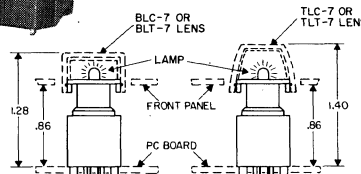
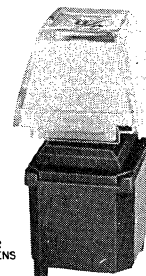
- LIGHTED WITH T-1 BI-PIN LAMP, SOCKETED
- FOR 5/8" CENTER MOUNTING



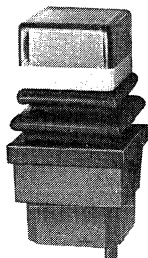
T-5L With Box Lens or Truncated Lens



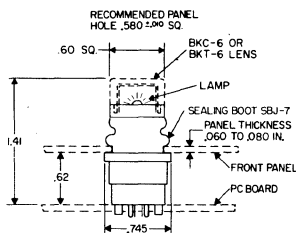
- FOR 3/4" CENTER MOUNTING
- LIGHTED WITH T-1 BI-PIN LAMP, SOCKETED



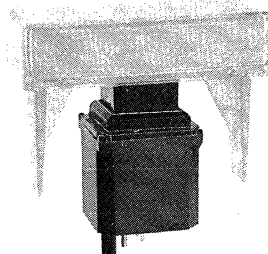
T-5J With Panel Sealing Boot and Box Lens



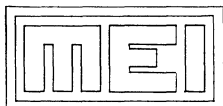
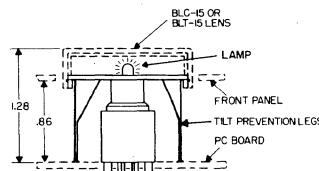
- ENVIRONMENTALLY SEALED ABOVE AND BELOW MOUNTING PANEL
- VINYL BOOT SEALS AGAINST LIQUID AND DUST
- FOR 3/4" CENTER MOUNTING
- LIGHTED WITH T-1 BI-PIN LAMP, SOCKETED



T-5Y With Double Width Box Lens



- LIGHTED WITH T1 BI-PIN LAMP SOCKETED
- OCCUPIES SPACE OF TWO T-5L W/BOX LENS



**MECHANICAL
ENTERPRISES
INC.**

461 CARLISLE DRIVE
HERNDON, VA 22070
(703) 435-9496
TWX 710-832-0942