

SERIES T-5

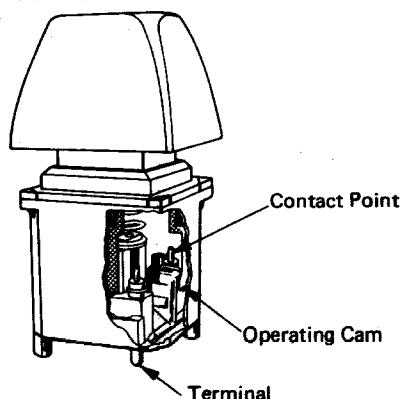
The T-5 keyboard switch has long life, low-bounce, cross-bar contacts with all the advantages found in more expensive full-featured keyboard switches. The T-5 is adaptable to all keyboard environments and should be employed where low keyboard construction cost is a prime requisite in the keyboard design.

Switching action is accomplished by movement of one gold plated bar against another at right angles (classic cross bar switching). The bars strike with a velocity determined only by spring forces and not subject to the speed at which the switch plunger is struck. This type of design provides a much more constant and lower contact bounce than is found in mechanical contact switches of more conventional design. The effects of operator differences are substantially eliminated.

Mechanically, the T-5 switch incorporates precision tracking surfaces between plunger and body which prevent binding even when double-width keytops are installed. The base contains mounting studs in the extreme corners which provide precision alignment. Heavy terminals, when soldered to a 1/16 PC board, produce a rugged assembly without a costly metal mounting frame.

Electrical configurations include both single and double pole versions, with normally open or normally closed contacts. (Form C contact is not available.) All switches are also available with alternate switching action: push on/push off. Lighted versions use a T-1 bi-pin incandescent lamp which is easily changed from the front panel.

T-5 Switch



SPECIFICATIONS

	T-5
CONTACT RATING, DC RESISTIVE:	3W max.
VOLTAGE:	24V max.
INITIAL CONTACT RESISTANCE:	100 m Ω max.
PLUNGER TRAVEL:	.170 \pm .010 in.
PRE-TRAVEL:	.080 \pm .030 in.
OPERATING FORCE	
SINGLE POLE, MOMENTARY:	3.0 \pm 0.5 oz. / 85g
DOUBLE POLE AND/OR ALT. ACTION:	5.0 \pm 0.5 oz. / 141.75g
TEMPERATURE	
OPERATING:	-25°C to +65°C
STORAGE:	-40°C to +70°C
CONTACT BOUNCE:	4 ms max.
MIN. ACTUATIONS, @ 5V, 100 μ AMPS:	20 x 10 ⁶

SWITCH TYPES AND SPECIFICATIONS

Keyboard Designation System

Catalog No. T - 5X - X - XX

1st 3 Digits

Basic Switch Type
T-5C, T-5S, T-5H, etc.

4th Digit

M — Momentary operation
A — Alternate action (Push ON,
Push OFF)

5th and 6th Digits

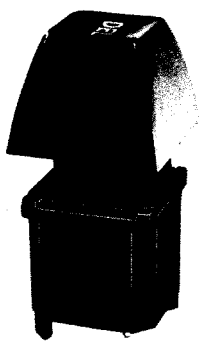
NO — One normally open contact
OO — Two normally open contacts
OC — One open and one closed contact

Note: Two normally closed contacts
not available.

**The above should be read in conjunction with
the Proc.Spec. 2325 to verify Part No.codes**

Note: An optional 5 oz. return spring is available for single pole momentary switches. To order, add the suffix "HS" to the switch part number.

T-5C With Full Size Double Shot Keytop



- FOR 3/4" CENTER MOUNTING

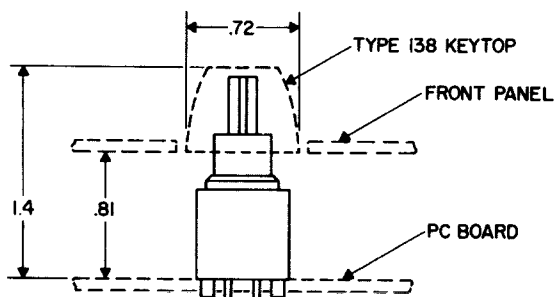
These are supplied by RS without keytops

T-5C-M-NO = RS 337-217

T-5C-A-NO = RS 336-208

T-5C-M-NO-HS = RS 335-794

For compatible keytops see
RS 335-435 & 335-441



LEVELING DEVICES

For Space Bars

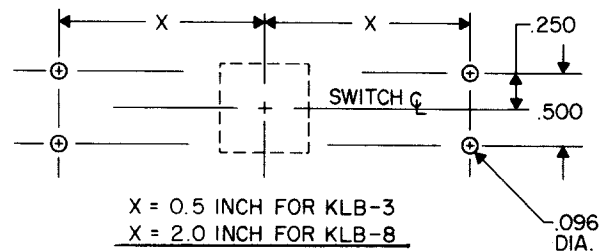


KLB-8

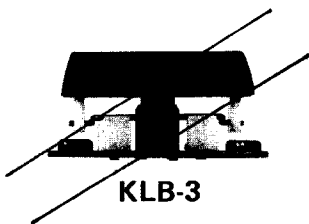
+ 138-6000 = RS 337-188

PC Layout

For KLB-8 and KLB-3



~~For 3X Keytops~~

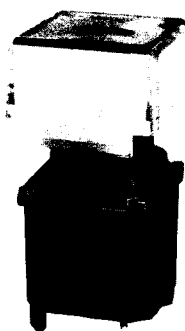


KLB-3

T-5L-M-NO = RS 336-191

T-5L-A-NO = RS 336-185

T-5L With Box Lens or Truncated Lens



- LIGHTED WITH T-1 BI-PIN LAMP, SOCKETED
- FOR 3/4" CENTER MOUNTING
- TRUNCATED LENS SHAPE MATCHES T-5C



BLC-7 = RS 336-179

BLA-7 = RS 336-163

BLG-7 = RS 336-157

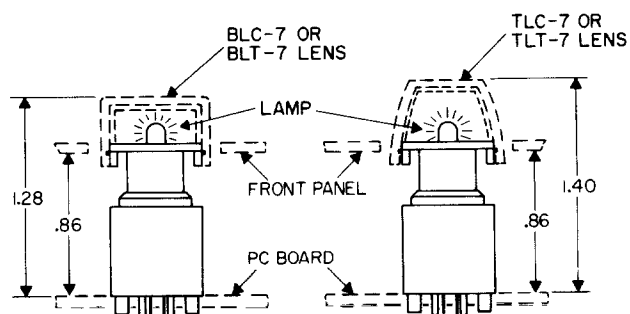
TLG-7 = RS 336-113

TLR-7 = RS 336-107

BLR-7 = RS 336-141

TLC-7 = RS 336-135

TLA-7 = RS 336-129



LENSES

BOX LENS FOR T-5K



CLEAR W/DIFFUSER
BKC-6



TRANSLUCENT
W/O DIFFUSER
BKT-6

BOX LENS FOR T-5L



CLEAR W/DIFFUSER
BLC-7

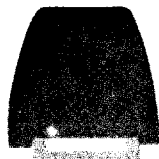


TRANSLUCENT
W/O DIFFUSER
BLT-7

TRUNCATED LENS FOR T-5L



CLEAR W/DIFFUSER
TLC-7



TRANSLUCENT
W/O DIFFUSER
TLT-7

COLORS FOR BKC-6, BLC-7 & TLC-7



RED



GREEN



YELLOW



BLUE



AMBER



ORANGE

LAMPS



T-1 SIZE BI-PIN
LAMPS, 5V, 60mA
BPE-5