



# T-15S KEYBOARD SWITCH SEALED CONTACT SERIES

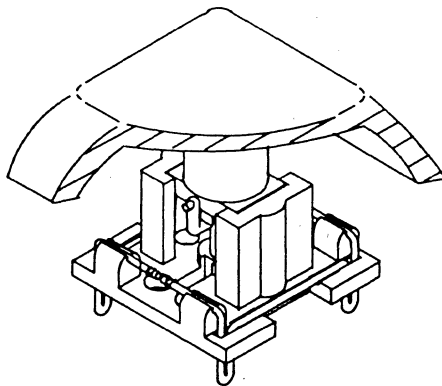
Preliminary April, 1985

## FEATURES

The T-15S Keyboard Switch meets a growing industry requirement for a very low profile full travel unit easily handled in a production wave soldering operation. Its unique sealed contact\* insures long reliable life. Primary features are:

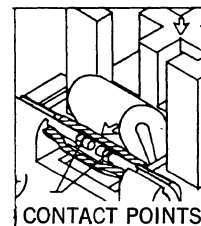
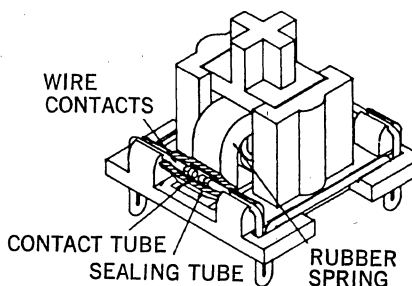
- SEALED LOW RESISTANCE LOW BOUNCE CONTACTS
- VERY LOW COST—COMPETES WITH CONDUCTIVE RUBBER
- LOWEST PROFILE (12.7 mm) WITH FULL TRAVEL (3.8 mm)
- BUILT-IN WIDE JUMPERS ALLOW SINGLE SIDED MATRIX
- TACTILE RESPONSE WITH OR WITHOUT AUDIBLE CLICK
- SPRING-LIKE TERMINALS HOLD SWITCH WHILE SOLDERING
- INDUSTRY STANDARD CRUCIFORM KEYTOP MOUNT
- STABLE MOUNTING WITHOUT METAL SUB-PANEL
- EXCELLENT PLUNGER TRACKING HANDLES ECCENTRIC OPERATION
- CENTER-TO-CENTER MOUNTING AS CLOSE AS 12.7 mm

\* Patent Pending



## DESCRIPTION OF CONTACTS

During operation rubber spring collapses into an inverted 'U' position providing a 'break-away' tactile sensation. Its lateral deflection forces the contact tube to bridge between points on the wire terminals. The silicone rubber tube maintains a seal throughout and its resiliency restores contact to normally open condition.



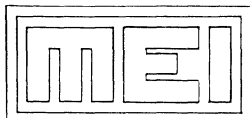
## OPTIONS

A unique OPTIONS BLOCK inserted in the switch body opposite the contacts will provide either an audible click for momentary switches or will convert a momentary switch to alternate action.

The optional HINGE COVER (available August 1985) will allow sub-panel mounting and provide a hinge for leveling bars which are required for very wide keytops.

## KEYTOPS

The T-15 keytop mount is the most frequently used cruciform style (equivalent to Cherry MX and others). Therefore several keytop manufacturers in the U.S. and abroad are able to supply, without a tooling charge sculptured and conventional keytop sets for the T-15. Legends are available either double-shot molded or sublimation printed. MEI stocks a limited selection of keytops for prototyping and low volume applications.



**MECHANICAL  
ENTERPRISES  
INC.**

461 CARLISLE DRIVE  
HERNDON, VA 22070  
(703) 435-9496  
TWX 710-832-0942

# MEI T-15S KEYBOARD SWITCH SEALED CONTACT SERIES

## SPECIFICATIONS

CONTACT RATING, DC RESISTIVE  
VOLTAGE

INITIAL CONTACT RESISTANCE

PLUNGER TRAVEL

PRE-TRAVEL

OPERATING FORCE TO MAKE

TEMPERATURE RANGE, OPERATING

TEMPERATURE RANGE, STORAGE

CONTACT BOUNCE

UL FLAMMABILITY RATING

LIFE, ACTUATIONS

## Momentary

1W Max

24V Max

100 m ohm Max

3.8 mm

1.9±0.6 mm

65±20 gm

—20°C to 65°C

—40°C to 85°C

5 ms MAX

94-HB

20 x 10<sup>6</sup>

## Alt. Action

1W Max

24V Max

100 m ohm Max

3.8 mm

1.9±0.6 mm

65±25 gm

—20°C to 65°C

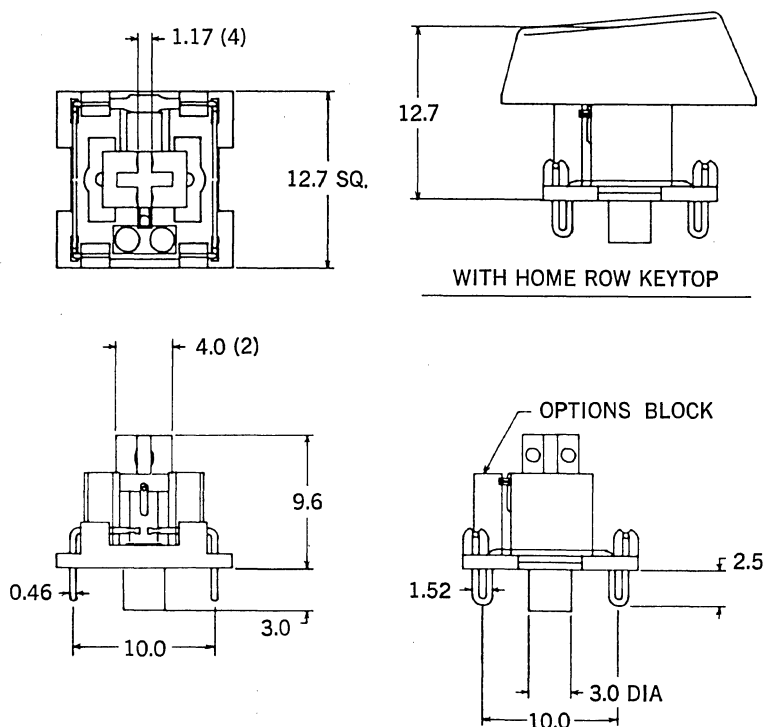
—40°C to 85°C

5 ms MAX

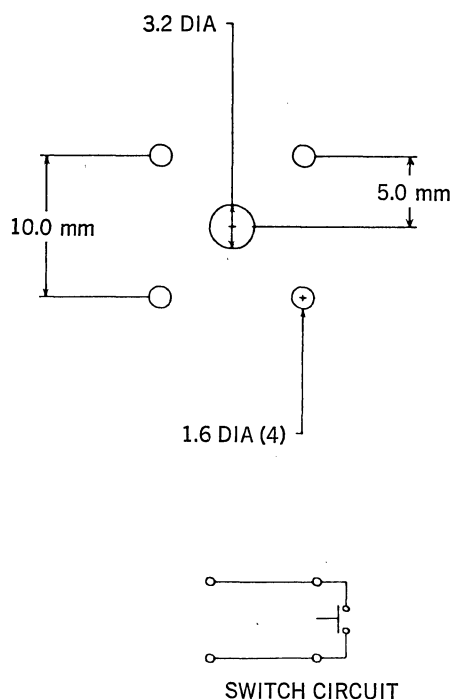
94-HB

10 x 10<sup>4</sup>

## OUTLINE DRAWING



## PCB HOLE PATTERN



## MODEL NUMBERS

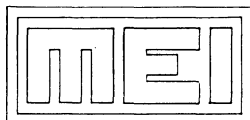
T-15SB = Basic Momentary

T-15SC = Momentary with Click

T-15SA = Alternate Action

## MOUNTING AND SOLDERING

Layout to pattern shown above. Switching should be snug in PCB. Hand or wave solder using water soluble flux or flux that requires no cleaning. Water wash. USE NO SOLVENTS.



**MECHANICAL  
ENTERPRISES  
INC.**

461 CARLISLE DRIVE  
HERNDON, VA 22070  
(703) 435-9496  
TWX 710-832-0942