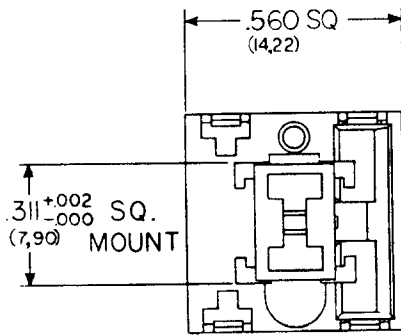
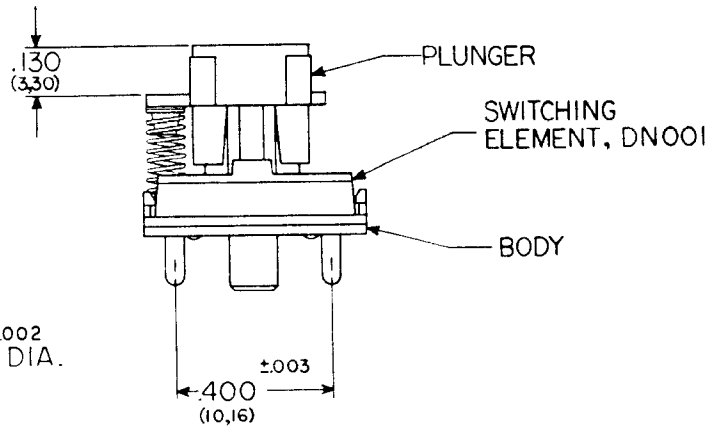
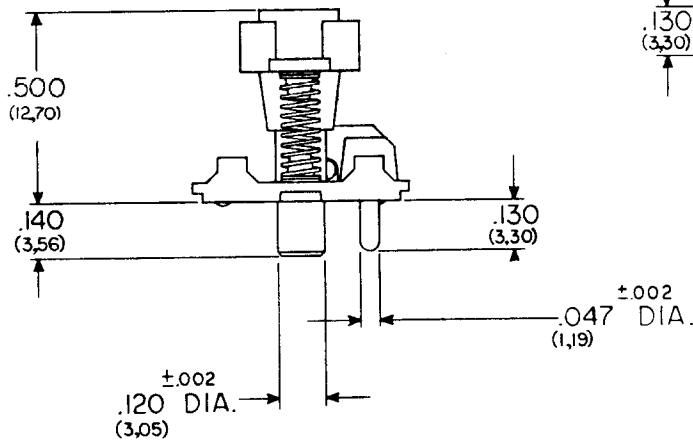


SPECIFICATIONS:

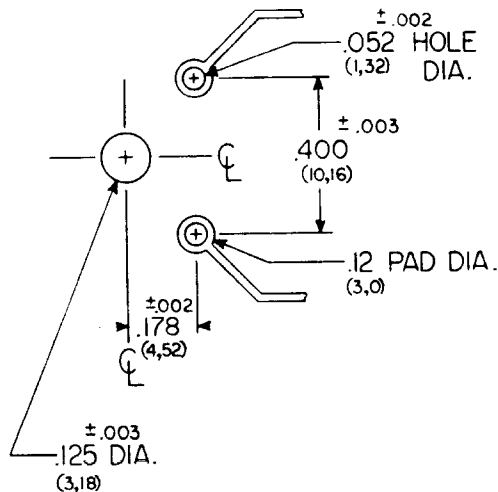


CONTACT RATING, DC RESISTIVE:	1 W MAX.
VOLTAGE:	24 V MAX.
INITIAL CONTACT RESISTANCE:	20 mΩ MAX.
PLUNGER TRAVEL:	.135 (3,43)
PRETRAVEL:	.070 ±.025 (1,78)
OPERATING FORCE TO MAKE:	85 ±15
TEMPERATURE, OPERATING:	-20 °C TO 75 °C
TEMPERATURE, STORAGE:	-40 °C TO 85 °C
CONTACT BOUNCE:	3 ms MAX.
UL FLAMMABILITY RATING:	94-HB
LIFE:	15 × 10 ⁶ OPERATIONS




NOTES:

1. UNLESS OTHERWISE SPECIFIED, TOLERANCE IS ±.010
2. WHEN WAVE OR HAND SOLDERING USE WATER-SOLUBLE FLUX. CLEAN WITH WATER ONLY



PCB HOLE PATTERN

A	11/17/83	REVISED OPERATING FORCE	RC
REV	DATE	DESCRIPTION	APP'D
 MECHANICAL ENTERPRISES, INC PRODUCT SPECIFICATION HERNDON, VA USA			
MODEL		SWITCH, PCB MOUNT, SPNO, MOMENTARY	
DN500			
SCALE	DATE	DRAWING NUMBER	REV
2/1	9/30/82	1500300	A