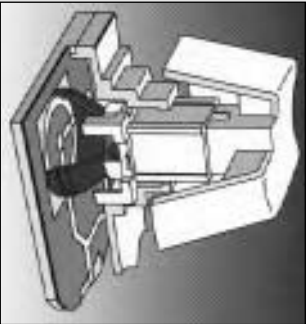


Model Series
RT-9100W

FEATURES/BENEFITS

- Integrated stereo speaker system with 2+2 watt amplifier
- SRS 3D surround sound creates a panoramic sound experience
- Easy access audio control panel
- Built in microphone for all recording purposes
- Three side jacks for subwoofer, microphone, and headphone
- Compatible with all soundcards and portable audio devices
- Three new keys allow quick access to Windows 95 operating system
- Plug any audio device into the ConcertMaster keyboard for great sounding music while your work or play
- Audio LEDs display 'power' on, 'SRS' on and 'mute' status
- Advanced electronics eliminate many common compatibility problems
- Full compatibility with IBM AT/PS-2, 286 or higher processors, Novell NetWare, DOS, Windows 3.x and Windows 95
- Approved by FCC Class B, CSA, UL, TUV, CE, VDE, Sound Blaster Compatibility Program and Microsoft Compatibility Labs
- One year warranty



Silent membrane keyswitch

The Right Touch!

ConcertMaster™ Multimedia Keyboard



- 1 One cord exits keyboard for clutter-free workspace
- 2 High fidelity sound with 2 watt magnetically shielded speakers powered by 2+2 watt amplifier
- 3 Power slide switch allows you to turn on speakers or internal microphone without affecting computer keyboard functionality
- 4 Stereo slide switch allows you to alternate between standard stereo and SRS 3D Stereo
- 5 Built-in omnidirectional microphone for all recording purposes
- 6 Large volume knob accurately adjusts for optimum listening pleasure
- 7 Mute button controls integrated speakers and headphone jack for temporary silence
- 8 Side mounted jacks for clean side cable entry
 - Subwoofer jack allows for intensified bass and fidelity
 - Microphone jack allows for all recording purposes
 - Headphone jack allows for private listening and connection of external speakers
- 9 Two Windows Logo Keys let you quickly access Windows 95 Operating System
- 10 The Application Key functions as a context menu key, bringing the functionality of the right mouse button to the keyboard



Designed for
Microsoft®
Windows 95



NIMB
TECHNOLOGIES INC.

Model Series
RT-9100W

ELECTRICAL-SOUND SUBSYSTEM

Input/Output Signal Levels: 2 Vrms input max., 0.4 Vrms for full output at max. gain
Output Current: 144 mA @ 9V per channel (F = 1KHz)
Input Voltage: 9 ~ 12 VDC
Input Current: 750 mA ~ 500 mA @ max. output

SPEAKERS

Rated Max Power: 2 Watts/Channel
Impedance: 8 Ohms
Frequency Response: 50 Hz. to 20 KHz
Lowest Resonance Frequency: 120 Hz
Sound Pressure Level: 85 dB @ 1W, 1m, 1KHz
Distortion Factor: < 1%

Headphone/Speaker Input

Headphone Impedance: 330 Ohms

MICROPHONE

Type: Omnidirectional
Standard Voltage: 4.5 V
Impedance: Low
Operating Voltage Range: 1.5 V to 10 V
Current Consumption: 0.3 mA max.
Self Noise: Equivalent to 41 dB SPL
Sensitivity: 2 mV output for 80 dB SPL IN.

SUBWOOFER OUTPUT

Output Voltage: 4 Vrms maximum
Gain: Ho = 5.8 dB
Frequency Response: 20 Hz to 20 KHz, +0 to -1.5dB THD (Total Harmonic Distortion); <0.5% @ 40 Hz to 20 KHz
Output Impedance: 100 Ohms

EXTERNAL POWER SUPPLY (AC Adapter)

Input Voltage: 120 VAC
Input Frequency: 60 Hz
Output: 9 VDC, 850 mA
Polarity: Center Positive
PC Plug: 5.5mm OD, 2.5mm ID, 11mm long

FUNCTIONAL

Auto Repeat

This function is controlled by the host system with the following default values. When a key is held down, the keyboard will continuously output 10.9 characters per second after a delay of 0.5 seconds.

Locking Functions

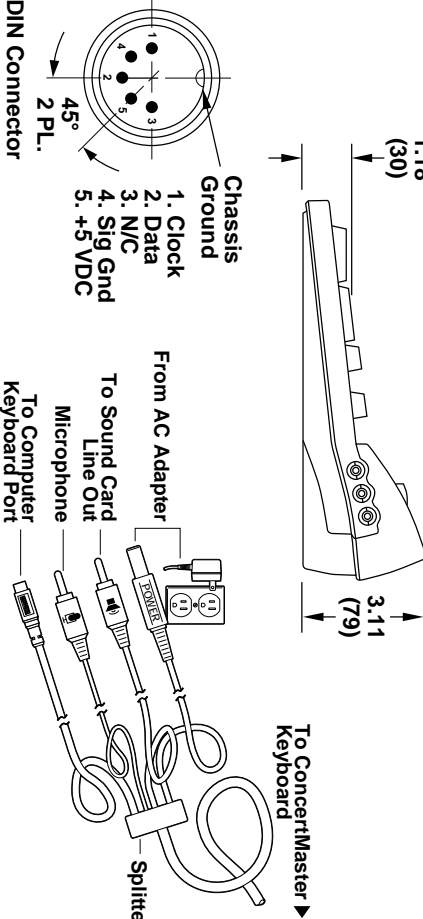
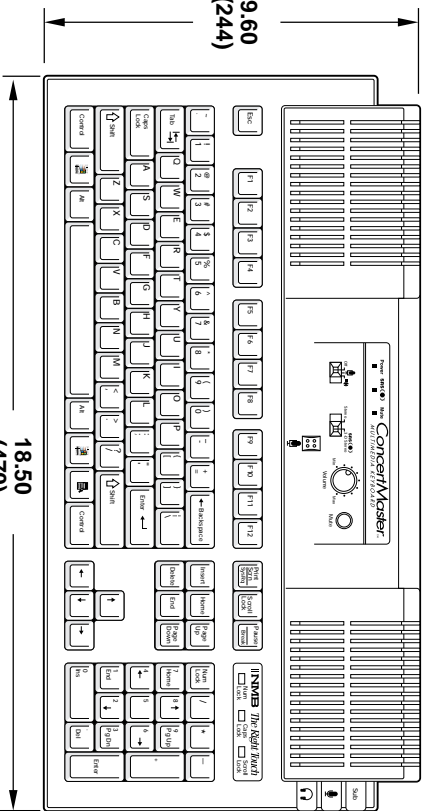
LEDs located on the keypad portion of the enclosure indicate the status of Num Lock, Caps Lock, and Scroll Lock keys. The LED indicators are controlled by the host system.

Buffering

The keyboard will buffer up to 16 bytes when the system is unable to receive scan codes from the keyboard. The keystrokes are stored in a first-in, first-out (FIFO) memory buffer.

ConcertMaster™ Multimedia
Keyboard Specifications

Dimensions in () are in millimeters



Length of cord set: 78" (1981.2)
Length of splitter: 1" (25.4)
Length of Splitter to connector: 25" (635)

ELECTRICAL-KEYBOARD

Input/Output: Data Logic Levels – Standard TTL
Input Voltage: 4.75 to 5.24 VDC
Input Current: 250 mA (maximum)

ENVIRONMENTAL

Temperature:
Operating: +32°F to +131°F (0°C to +55°C)
Storage: -40°F to +149°F (-40°C to +65°C)

Electromagnetic Compatibility

The keyboard is designed and manufactured to comply with FCC rules Part 15, Class B, computing device peripheral.

Electrostatic Discharge (ESD)

The level of ESD protection is dependent on the grounding of the host system. In most cases, the RT keyboard features 15 KV protection without catastrophic failure and 10

KV protection without any soft errors. Conforms to IEC 801-2 specifications.

■ **MECHANICAL**
Enclosure Material: Injection Molded Thermoplastics.
UL flammability rating 94 HB.
Keyswitch Travel: 0.140±0.020 inch (3.56±0.5 mm)
Travel to Make: 0.090±0.020 inch (2.29±0.5 mm)
Operating Force: Momentary Action - 2.0 oz. nominal (55 grams)
Feel: Tactile.
Life: Meets or exceeds 20 million cycles.

COMPATIBILITY CERTIFICATIONS

Microsoft and Sound Blaster Compatibility Labs and Novell NetWare Approval

AGENCY APPROVAL

Keyboard is approved by FCC Class B, UL, CSA, TUV, CE, and VDE.

The Right Touch! from
NIMB
TECHNOLOGIES INC.

NIMB TECHNOLOGIES INC.
9730 Independence Avenue ■ Chatsworth, California 91311
Telephone: (800) 662-8321 ■ (818) 341-3355 ■ Fax: (818) 341-8207 ■ Internet: <http://www.nimbtech.com>
K&B'96. Printed in U.S.A. Specifications Subject to Change Without Notice. "Right Touch" is a trademark of NMB Technologies Inc. All other brand or product names mentioned are trademarks or registered trademarks of their respective holders.