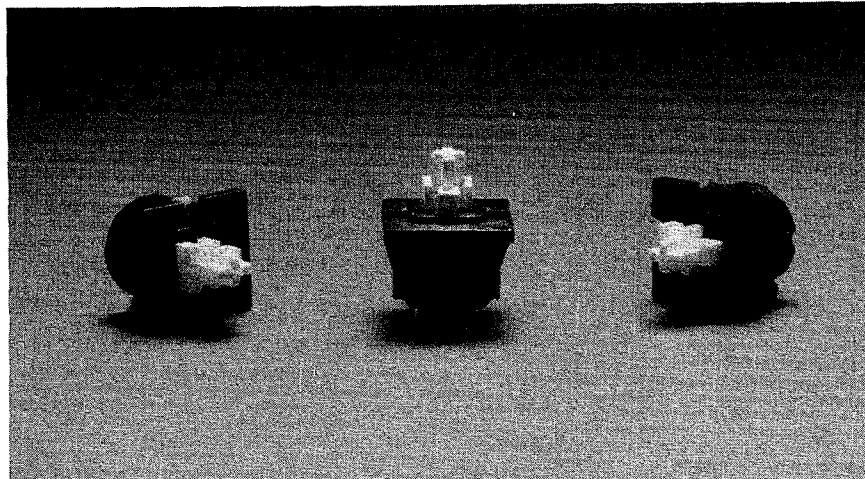


Low profile keyboard switch with mechanical contacts



FEATURES

- Life three million keystrokes
- Low profile
- Self cleaning contacts
- Various style keycaps available

SPECIFICATIONS

MECHANICAL

Operating force	3.5 \pm 0.8 Oz.
Pretravel	0.045 \pm 0.01 In.
Total travel	0.01 \pm 0.02 In.

ELECTRICAL

Current	1 mA
Voltage	24 VDC
Contact resistance	5 Ohm max. (250 mOhm initial)
Bounce	5 mSec. max.
Circuit	S.P.S.T. Normally open

ENVIRONMENTAL

Life	3,000,000 cycles
Operating temperature	-10° to +60° C
Storage temperature	-30° to +80° C
Humidity	0 - 95%RH, non condensing

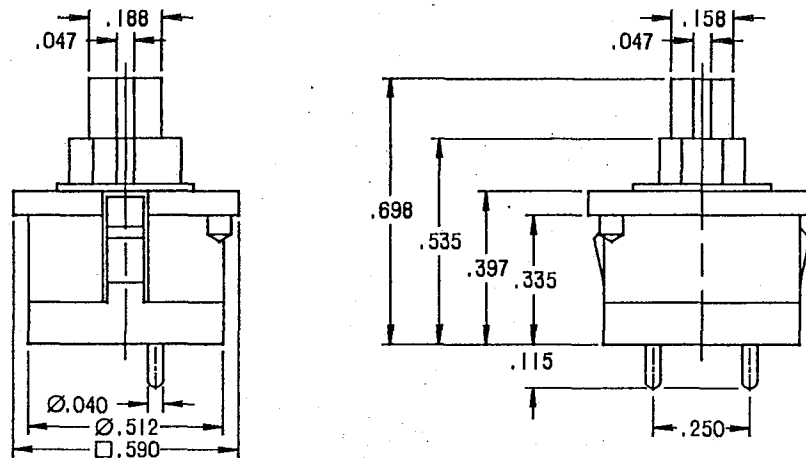


GEORGE RISK INDUSTRIES, INC.

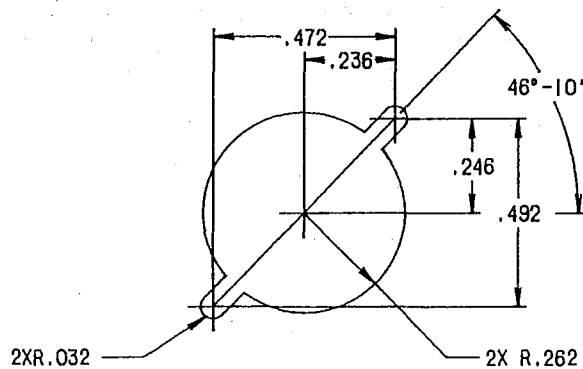
GRI PLAZA • KIMBALL, NEBRASKA 69145-1599
TEL: 800-445-5218 FAX: 308-235-2609
800-523-1227
308-235-4645

KBM-LP

DIMENSIONS

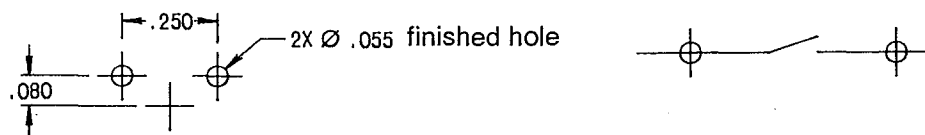


MOUNTING PANEL CUTOUT



Recommended panel thickness: .050 IN.

P.W.B. LAYOUT AND SCHEMATIC



ORDERING INFORMATION

Part Number

KBM-LP

Bulletin S-20



GEORGE RISK INDUSTRIES, INC.

GRI PLAZA • KIMBALL, NEBRASKA 69145-1599
TEL: 800-445-5218 800-523-1227 308-235-4645
FAX: 308-235-2609