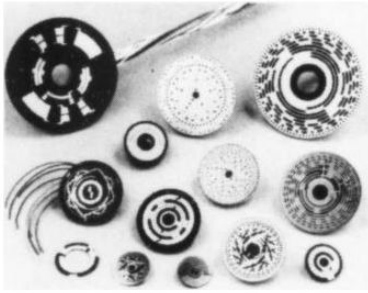


Send your
electrical contact
requirements to—

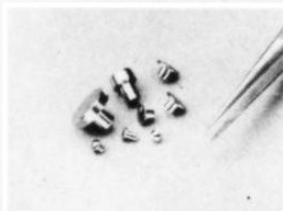
NEY



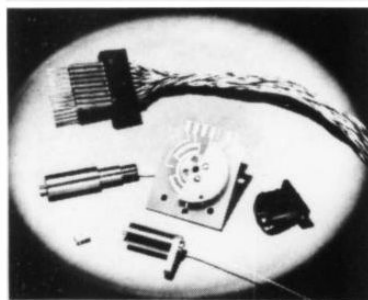
**NEYETCH
COMMUTATORS
AND SLIP RINGS**



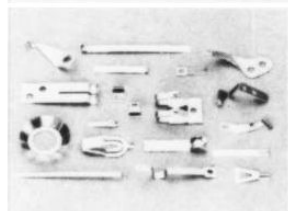
WIRE FORMS



HEADED CONTACTS



**ASSEMBLED
COMPONENTS**



**STAMPED AND
FORMED CONTACTS**



**WELDED AND
STAKED ASSEMBLIES**



**MOLDED
CONTACT
ASSEMBLIES**

PALINEY®, NEYORO® ALLOYS

62 PAGE CATALOG ON REQUEST

THE J. M. NEY COMPANY

Maplewood Ave., Bloomfield, Conn.
TEL. HARTFORD 242-2281 (area 203)

NEY

CIRCLE 36

NEON DISPLAY ELEMENT PLUGS IN READY-TO-GLOW

To speed the assembly of display modules, this neon plug-in element is front mounted on a pc board which contains the decoder-driver and logic required to accept 4-line BCD inputs. DM-17G Series input options include: ELFIN with BCD-to-7 decoder-driver for \$15.04 ELFIN with decoder-driver and memory for \$17.46, ELFIN with decoder-driver and decade counter for \$17.8. Alco Electronic Products, Inc., Lawrence, MA 01842. **Circle 115**

LIGHT BUNDLES RESOLVE UP TO 50 LINE PAIRS/MM

Each bundle of these flexible fiber optics consists of many thousands of 10 - 12 micron fibers and transmits images with resolutions of up to 50 line pairs/mm. Bundle lengths vary from 1' - 4', and diameters range from 0.06" - 0.125". You can select from either vinyl or stainless steel braid sheathing and buy bundles singly or in quantities for such applications as commercial inspection, medical instruments and data displays. Optics Technology, Inc., 901 California Ave., Palo Alto, CA 94304. 415-327-6600. **Circle 112**

MULTIPLE PULSES GET THERE WITHIN 4 NANOSEC

Three separate outputs of the Model 5109 10 MHz pulse generator provide: (1) positive output, (2) negative output; (3) integrated circuit compatible output designed for TTL, RTL and DTL ic's. All three outputs have a nominal rise time of less than 4 nanosec. Select from single, delayed or double pulses with output pulse width and delay adjustable from 10 nanosec - 100 millisecc. Square wave output is standard, as are three output source impedances: 50 Ω into 10 V; 100 Ω into 10 V; or 200 mA at 10 V max. Price: \$390. Data Dynamics Div., 240 Humphrey St., Englewood, NJ 07631. **Circle 109**

SEVEN CAP SHAPES TOP KEYBOARD SWITCHES

The Model S830 keyboard switch features both momentary and alternate action, and five snap-on adapters mate with most key-tops in use today. SPST contact is Clare Picoreed. Keytops are available in seven shapes including a changeable legend style and two-shot molded buttons in a choice of colors and legends. Keytops may be used straight or at an 11 deg angle for stepped keyboard applications. Switch has calibrated pretravel, self-lubricating parts, nickel alloy terminals and an ultrasonic welded ease with a base that cannot push out. C.P. Clare & Co., 3101 Pratt Ave., Chicago, IL. **Circle 206**

ERROR ANALYZER INDICATES RATES DOWN TO 1×10^{-9}

MX-270 Bit Error Rate Analyzer, a performance evaluation test equipment for digital communications channels, provides tests of modems and channels on simplex, duplex or loop basis. It compares mark, space, square wave, or short or long pseudo-random sequences bit-by-bit and indicates generated sequence and error rate directly. Error rate analyzer operates up to 10 megabits/sec and indicates error rates between 1×10^{-2} and 1×10^{-9} . Magnavox Research Laboratories, 2829 Maricopa St., Torrance, CA. **Circle 124**

PEN SOUNDS OFF TO INPUT

Graf/Pen, a graphic data input device, uses sound to determine the position of a hand-held pen for the purpose of digitizing information. Applications suggested by a four-page brochure include order entry, newspaper page make-up, N/C machining instructions and computer-aided design. Science Accessories Corp., 65 Station St., Southport, CT 06490. **Circle 141**