

You choose from all the best technologies at

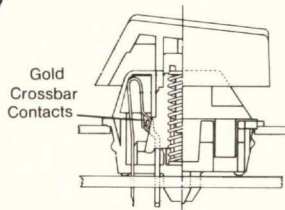
# KEYBOARD HEADQUARTERS

**DIN compatibility in the most advanced keyboard technologies.**

**Only from Cherry:** Where we are ready today to meet 1985 ergonomic standards.

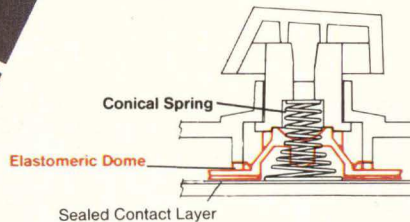
**Only from Cherry:** Where we make all the most cost-effective technologies for your application.

**Only from Cherry:** Your Keyboard Headquarters. Worldwide.



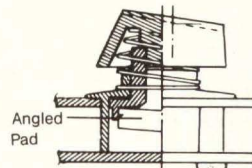
## Full Travel Hard Contact

Gold crossbar contact configuration relied on in millions of applications worldwide. A first from Cherry more than a decade ago. Now proven and improved to meet the low-profile challenges of the 80's.



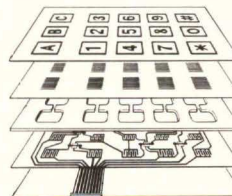
## Full Travel Sealed Contact

**NEW:** A next generation keyboard that combines full travel with the quality and reliability of sealed silver contacts for long life, low cost. **Conical steel spring action** with linear feel... **or elastomeric action** with tactile feel.



## Full Travel Capacitive

Pad capacitive in a uniquely simple design requiring only five parts and a snap-in angled pad. Another keyboard technology alternative from Cherry... the folks with the *most* logical alternatives.



## Flat Panel Membrane

Unlimited design options thanks to our state-of-the-art production techniques and in-house fabrication. Thin, lightweight, reliable, low cost. All this and sealed contacts, too!

SEND FOR COMPLETE DATA

# CHERRY

KEYBOARD HEADQUARTERS

**CHERRY ELECTRICAL PRODUCTS CORP.**

3614 Sunset Avenue, Waukegan, IL 60087 • 1-312-578-3500

CIRCLE 22

*Wireless Keyboards too! Call me at 1-312-578-3524 Bob Terwall*