

# SWITCHES

## KEYBOARD SWITCHES

A range of small, lightweight, PCB mounting keyboard switches for data entry and instrument switching. Two part caps are available for all switches, with a coloured base and clear top, for customised labeling.

## TACTILE SWITCHES

Uses such as time setting, instrument function selection, intercom switching etc.

### KHC 10901

Momentary contacts, push to make, 1 pole.

Spec

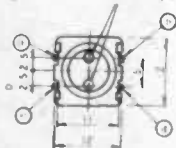
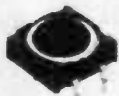
Contact: Mechanical  
 Operating Force: 130 +/- 50g  
 Stroke: 0.3 + 0.2mm  
           - 0.05mm  
 Contact resistance: 100m ohms max  
 Life: 500,000 cycles min  
 Max current: 50mA at 12VDC



Stock No.	1-24	25-99	100+
53-10901	18p	16p	15p

### KHC10902

As KHC10901 but with built in cap top.



Stock No.	1-24	25-99	100+
53-10902	18p	16p	15p

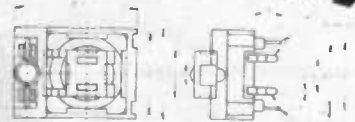
### KHC15001

Right angle version of KHC10901.

Stock No.	1-24	25-99	100+
53-15001	22p	18p	17p

### KHC11901

With red LED indicator.



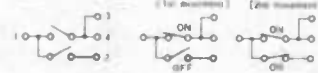
Stock No.	1-24	25-99	100+
53-11901	31p	28p	26p

### KHF10901

Double action tactile switch providing two movements in one unit. With initial push the first contact position is 'ON', with further pressure the second contact also switches 'ON'.



Switch action configuration



Specification:

Maximum current: 20mA at 12VDC  
 Operating force: 1st position 90 +/- 40gms  
                           2nd position 280 +/- 100gms  
 Stroke: 1st position 0.7 +/- 0.3mm overall  
           stroke 1 +/- 0.4mm  
 Contact resistance: Maximum 100mR  
 Operational life: 200,000 cycles minimum

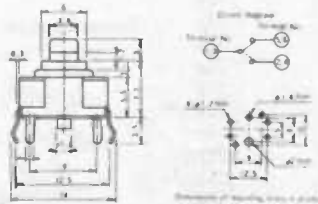
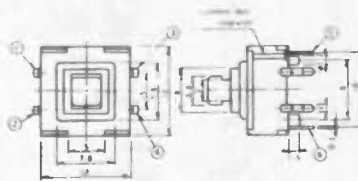
Stock No.	1-24	25-99	100+
53-30901	29p	26p	25p

### KHE10901

Small, PC mounting keyboard switch with changeover contacts.

Specification:

Maximum op current: 20mA at 12VDC  
 Operating force: 100 +/- 40gms  
 Stroke: 0.6m +/- 0.2mm  
 Contact resistance: 100m ohms maximum  
 Operating life: 100,000 cycles min



Stock No.	1-24	25-99	100+
-----------	------	-------	------

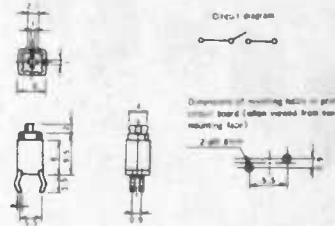
53-60901	29p	27p	23p
----------	-----	-----	-----

### KEF10901 (Soft Touch)

Very small, single key switch. Uses unique conductive rubber contact and is suitable for use where pulse input to logic circuits are required.

Specification:

Maximum current: 20mA at 12VDC  
 Operating force: 80 +/- 40gms  
 Stroke: 1 +/- 0.3mm  
 Contact resistance: 1k ohms maximum  
 Operational life: 100,000 cycles minimum

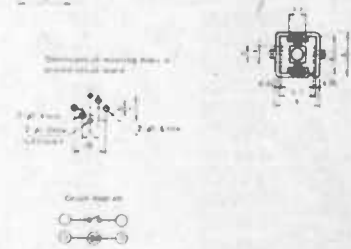
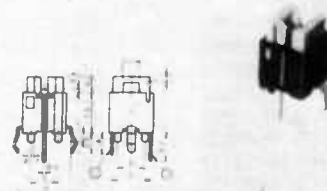


Stock No.	1-24	25-99	100+
53-40901	18p	16p	15p

### KEC11901

With integral red LED.

Small high performance switch using rubber contact.



Specification:

Operating force: 80 +/- 40gms  
 Stroke: 0.8 +/- 0.4mm  
           - 0.1mm  
 Contact resistance: 1k ohm maximum  
 Operational life: 100,000 cycles

Stock No.	1-24	25-99	100+
-----------	------	-------	------

53-51901	31p	29p	27p
----------	-----	-----	-----

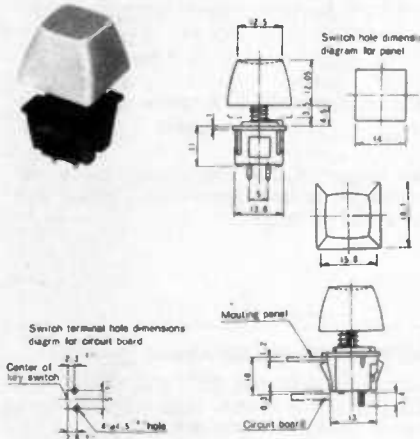
# SWITCHES

## KCC10002

Data entry keyboard with high reliability and minimum 10 million operations.

Specification:

Maximum current: 100mA at 12VDC  
 Operating force: 90 +/- 25gms  
 Key stroke: 3.5 +/- 0.5mm  
 Contact resistance: 5 ohms

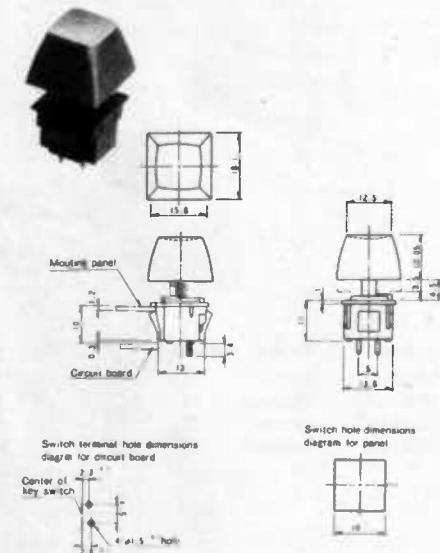


Price less keytop

Stock No.	1-24	25-99	100+
53-70002	24p	22p	20p

## KCC10902

As KCC10002 type but self locking.



Price (less key top)

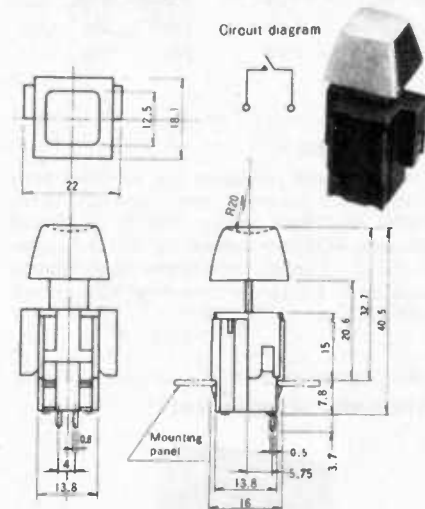
Stock No.	1-24	25-99	100+
53-70902	48p	42p	38p

## KGF10021

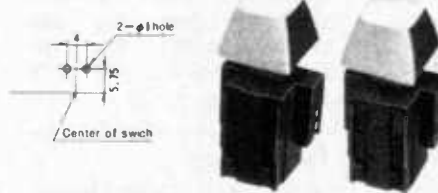
Data entry keyboard switch with reed switching element. Minimum 20 million operations.

Specification:

Current: 100mA at 12v  
 Operating force: 60 +/- 25gms  
 Key stroke: 4.3 +/- 0.5mm  
 Contact resistance: 200m ohms maximum



Switch terminal hole dimensions diagram for circuit board

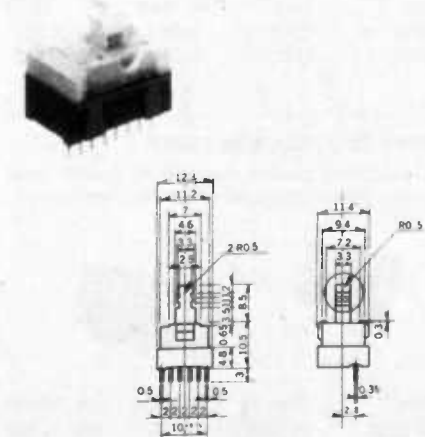


Price (less keytop)

Stock No.	1-24	25-99
53-80021	62p	55p

## SUT SERIES SWITCHES

Small PC mounting double pole changeover switch. Available in latching or momentary operation.



Type	Stock No.	1-24	25-99	100+
Latching	53-90010	32p	27p	23p
Momen.	53-90011	32p	27p	23p

## KEYSWITCH CAPS

### KT5 SERIES

Small square keytop to suit types KHC10901, KHF11901 and KHE10901. Two part moulding, blue base, with clear top to allow user legend to be inserted.



Stock No.	1-24	25-99	100+
53-90901	17p	14p	10p

### KT6 SERIES

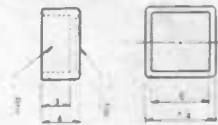
'Piano Key' type top to suit KH11901. Colour black.



Stock No.	1-24	25-99	100+
53-90902	12p	9p	7p

### KT7

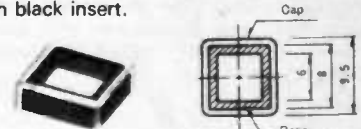
Small square keytop to suit type KEF10901. Two part moulding, clear top with ivory base to allow user legend to be inserted.



Stock No.	1-24	25-99	100+
53-90904	18p	15p	12p

### KT9

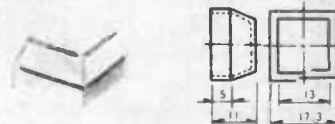
Small square keytop with centre cutout to suit type KEC11901. Two part moulding, clear top with black insert.



Stock No.	1-24	25-99	100+
53-90905	19p	16p	12p

### KT2-1

Two part cap for use with KCC10002, KCC10902, and KGF10021. Clear top with ivory base, to allow user legend to be inserted.



Stock No.	1-24	25-99	100+
53-90906	18p	15p	12p

### KT2-2

Double width version of KT1-1

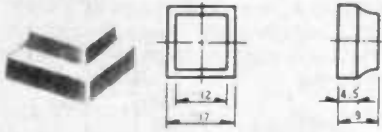


Stock No.	1-24	25-99	100+
53-90907	18p	16p	13p

# SWITCHES — KEYBOARDS

## KT3-1 (Numbered)

One piece keytop in ivory colour available with a range of letters and numbers.



Legend	Stock No.	Legend	Stock No.
0	53-90910	9	53-90919
1	53-90911	T	53-90920
2	53-90912	C	53-90921
3	53-90913	CE	53-90922
4	53-90914	P	53-90923
5	53-90915	+	53-90924
6	53-90916	-	53-90925
7	53-90917	2	53-90926
8	53-90918		
Prices	1-24	25-99	100+
	8p	8p	7p

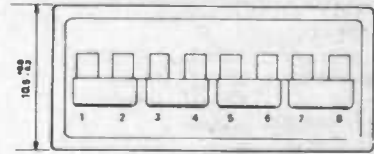
## MINIATURE PUSH

Sub-miniature push to make switch. Rated 1A at 240VAC.



Stock No.	Type	1-24	25-99	100+
53-00300	P-t-M	30p	26p	21p
53-00302	P-t-B	30p	26p	21p

## TYPE BX - SLIDE LEVER CHANGEOVER



Type	Stock No.	No. ways	1-9	10-99
B-8AX	53-84009	4xSPST	2.10	1.95

Other types of BX changeover types are available on special order only - please call sales office for details.

## LEVER SWITCHES

### SLR1

Miniature low profile switch with integral chrome finish knob. 2 pole changeover.



Stock No.	1-24	25-99	100+
53-00100	32p	28p	22p

## MINIATURE TOGGLE

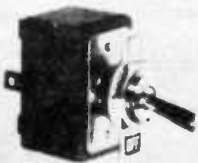
Sub-miniature switches available in single pole changeover, double pole changeover and 3 position single pole changeover with centre off. Contacts rated 3A at 125VAC. Mounting hole 6mm dia.



Stock No	Type	1-24	25-99	100+
53-00200	SPCO	85p	55p	49p
53-00201	OPCO	85p	76p	68p
53-00202	3p SPCO	85p	76p	88p

## MAINS TOGGLE

Panel mounting double pole changeover mains toggle switch with solid terminals. Contacts rated at 1.5A 250VAC. Mounting hole 12mm.



Stock No	Type	1-24	25+
53-00208	OPCO	95p	88p

## TYPE DNS - SLIDE LEVER



Type	Stock No.	No. ways	1-9	10-99
DNS04	53-04009	4xSPST	81p	69p
DNS06	53-06009	6xSPST	88p	76p
DNS08	53-08009	8xSPST	1.40	1.10

## TYPE DNT - PIANO LEVER

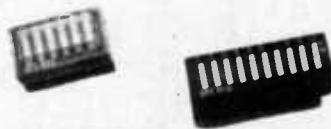
Switch is 'on' when lever is in lower position.



Type	Stock No.	No. ways	1-9	10-99
DNT4	53-40009	4xSPST	1.05	90p
DNT8	53-80009	8xSPST	1.45	1.20

## TYPE SPC - ROCKER LEVER

Transparent covers available to special order only - please call sales office for details.



Type	Stock No.	No. ways	1-9	10-99
SPC002	53-00209	2xSPST	88p	76p
SPC004	53-00409	4xSPST	1.40	1.10
SPC006	53-00609	6xSPST	1.45	1.20
SPC008	53-00809	8xSPST	1.70	1.60
SPC010	53-01009	10xSPST	2.00	1.85

## SRQ BCD/HEX PROGRAMME SWITCH

PCB mounting 10 way BCD and 16 way HEX BCD programme switch. Both types available in either vertical or horizontal mounting.

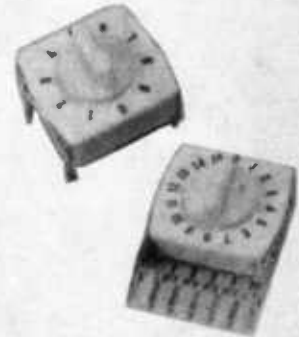
Spec:

Contacts: 6V at 100mA. Resistance less than 1ohm.  
Lifetime: Resistance less than 1ohm after 10,000 operations.

Operational

Temp: -30 to +70°C

Coding: Standard 4-bit

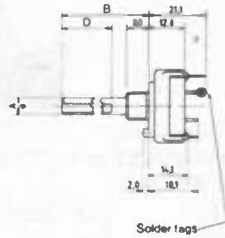


Stock No	Mounting	No. Ways	1-24	25-99
53-01102	Vertical	10	1.28	1.05
53-01103	Horizontal	10	1.28	1.05
53-01162	Vertical	16	1.38	1.24
53-01163	Horizontal	16	1.38	1.24

# SWITCHES

## ROTARY

Rotary wafer switches with adjustable limit stops. Suitable for 250VAC/DC at 150mA (non reactive). Spindle 0.25" dia, 30° indexing, make before break.



Type	Stock No.	Circuit	1-24	25-99	100+
CK1024	53-21024	1p 12 way	54p	50p	46p
CK1025	53-21025	2p 6 way	54p	50p	46p
CK1026	53-21026	3p 4 way	54p	50p	46p
CK1027	53-21027	4p 3 way	54p	50p	46p

## THUMBWHEEL SWITCH 4400

Front mounted, 10 position (0-9) BCD coded switch with complement outputs as well as straight BCD. Expected life over half million cycles. Character height 5mm. Snap together construction with push-in mounting cheeks.

H — 34mm  
W — 8mm  
D — 32mm



**New**

Type	Stock No.	1-24	25+
44010	53-44010	2.80	2.45
Mounting cheeks (pair)	53-44040	75p	60p

## THUMBWHEEL SWITCH J1009

Front mounted miniature 10 position (0-9) BCD coded switch. Expected life in excess of half million cycles. Snap together construction with push-in mounting cheeks. Character height 3mm

H — 15mm  
W — 6mm  
D — 16mm



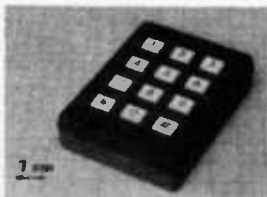
**NEW**

Type	Stock No.	1-24	25+
J1009	53-41009	2.65	2.45
Mounting cheeks (pair)	53-42009	55p	45p

## LOW PROFILE KEYBOARD KL0025

Low profile tactile keyboard. Front mounting with single pole x 12 configuration. Contact life 1 million operations at full rating (MTBF). Contact rating 50mA at 28VDC. Contact resistance 500 milliohms max at .2mA at 17VDC. 12 keys 0-9,

L — 69mm  
W — 50mm  
D — 5mm

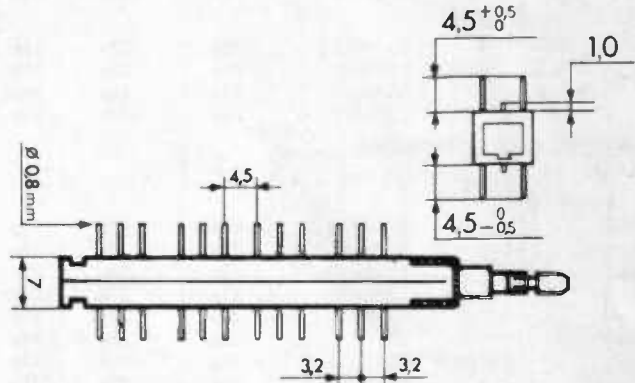


**new**

Type	Stock No.	1-24	25+
KL0025	53-60025	10.20	9.50

## DIALISTAT SWITCHES

(Not recommended for new designs)



## SWITCH BLOCKS

Switch Blocks	Stock No.	1-9	10+
2 pole C/O			
Latching	53-70060	31p	28p
Push/push	53-70061	32p	29p
4 pole C/O			
Latching	53-70062	41p	37p
Push/push	53-70063	43p	39p
6 pole C/O			
Latching	53-70064	51p	46p
Push/push	53-70065	52p	48p
8 pole C/O			
Latching	53-70066	63p	57p
Push/push	53-70067	64p	58p

Block prices include: block, spring, retaining clip, location cup, dust cap, (cam).

## BRACKETS AND LATCHBARS

May be cut to exact length by user. Holes on 5mm pitch. Brackets (Latchbars)

	Stock No.	1-9	10+
10 hole	53-70080	12p	9p
	53-70081	(9p)	(9p)
20 hole	53-70082	16p	14p
	53-70083	(12p)	(9p)
30 hole	53-70084	21p	18p
	53-70085	(14p)	(12p)
50 hole	53-70086	26p	23p
	53-70087	(16p)	(14p)

Use the bracket/latchbar with the number of holes 'rounded up' to a standard value.

## ILLUMINATED SYSTEM

This is simply a special button and LED holder used in connection with the standard switch. Remember to allow an extra switch pole to light the LED.

	Stock No.	1-9	10+
8			
LED holder	53-70090	9p	7p
Button	53-70091	20p	15p

See standard PL for details of various coloured LEDs.

## PIANO KEY CONVERSIONS & PUSH BUTTONS

A pivot bar for up to 10 button positions is supplied as standard, which must be cut to suit your exact requirement.

	Stock No.	1-9	10+
Pivot shaft	53-70070	45p	39p
Shaft holder	53-70071	10p	8p
Slider cap	53-70072	9p	8p
Piano key button	53-70073	22p	18p

# SWITCHES

## SUE SERIES SWITCHES SWITCH MODULES

	Stock No	1-24	25-99	100+
C/O modules inc spring				
2p	53-70000	26p	22p	17p
4p	53-70001	35p	30p	25p
6p	53-70002	43p	38p	33p
8p	53-70003	51p	46p	41p

## BRACKETS AND LATCHBARS

Brackets - 10, 15 or 20mm pitches.  
Please state 10, 15 or 20.

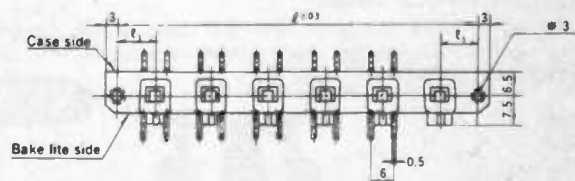
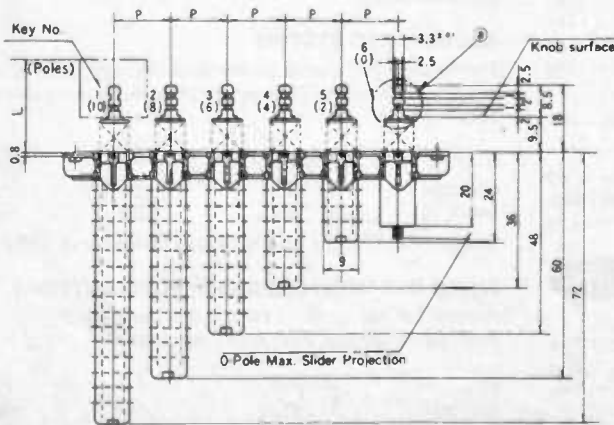
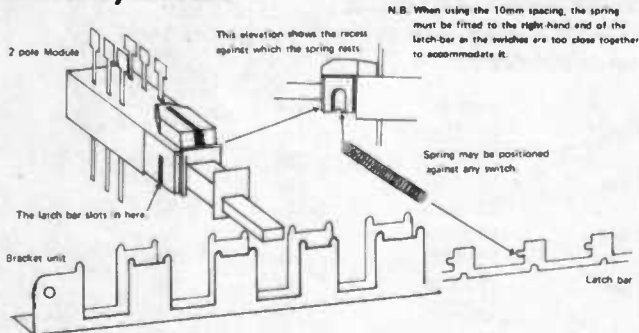
2 way	53-70010	20p	17p	15p
3 way	53-70011	25p	22p	19p
4 way	53-70012	29p	24p	21p
5 way	53-70013	31p	27p	23p
6 way	53-70014	34p	30p	27p
7 way	53-70015	36p	33p	29p
8 way	53-70016	38p	35p	31p
9 way	53-70017	40p	37p	33p
10 way	53-70018	42p	39p	35p

Latchbars - to interlock, 10, 15 or 20mm.

2 way	53-70020	10p	8p	6p
3 way	53-70021	10p	8p	6p
4 way	53-70022	12p	10p	8p
5 way	53-70023	12p	10p	8p
6 way	53-70024	14p	12p	10p
7 way	53-70025	16p	14p	12p
8 way	53-70026	18p	16p	14p
9 way	53-70027	18p	16p	14p
10 way	53-70028	18p	16p	14p

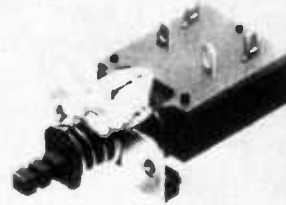
When ordering switches please state either interlocking push-push momentary action for each block. It is also very helpful to enclose a simple schematic of the switch bank you intend to build so we may endeavour to supply the correct parts regardless of possible errors in ordering.

## Assembly Details



SDU Mains switch 7 amp 240V compatible with SUE bracket including 2 pole SUE switch.

Stock No.	1-24	25-99	100+
53-70040	95p	86p	75p



SDS Mains switch 5 amp 240v compatible with SUE bracket.

Stock No.	1-24	25-99	100+
53-70050	62p	52p	45p

## KNOBS FOR PUSH BUTTON SWITCHES

Code X fits Dialstat

Code Y fits Alps switches

	Code	Stock No	Description	1-24	25-99	100+
Round 'A'	XY	53-50010	7.5x11.5mm black	9p	7p	6p
Round 'A'	XY	53-50011	7.5x11.5mm red	9p	7p	6p
Round 'C'	XY	53-50012	11x15mm black	10p	9p	8p
Chrome 'B'	XY	53-50013	10x13mm chrome	13p	11p	10p
Taper 'A'	X	53-50014	9.5x5.5mm taper black	9p	7p	6p
Taper 'B'	X	53-50015	9.5x5.5mm taper red	9p	7p	6p
Rectang. 'B'	XY	53-50017	Rect. as MkIII tuner	14p	10p	9p

